

Utah State Board of Education

2017–2018
UTAH PARTICIPATION AND
ACCOMMODATIONS POLICY

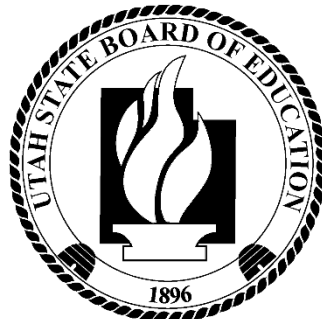
For Students Who Are:

- English Learners
- Students with Disabilities
- Students with Section 504 Plans

Utah State Board of Education
250 E. 500 South
P.O. Box 144200
Salt Lake City, UT 84114-4200

Dr. Sydnee Dickson
State Superintendent of Public Instruction

<https://www.schools.utah.gov>



Utah State Board of Education

250 East 500 South * P. O. Box 144200 * Salt Lake City, UT 84114-4200
<http://schoolboard.utah.gov>

District 1

Terryl Warner
Hyrum, UT 84319

District 4

Jennifer Graviet
South Ogden, UT 84403

District 7

Carol Lear
Salt Lake City, UT 84102

District 10

Kathleen Riebe
Cottonwood Heights, UT 84093

District 13

Scott Neilson
Spanish Fork, UT 84660

Sydney Dickson

State Superintendent of Public
Instruction

District 2

Spencer F. Stokes
Ogden, UT 84403

District 5

Laura Belnap
Bountiful, UT 84010

District 8

Janet Cannon
Holladay, UT 84117

District 11

Lisa Cummins
Herriman, UT 84096

District 14

Mark Huntsman
Fillmore, UT 84631

District 3

Linda B. Hansen
West Valley City, UT 84120

District 6

Brittney Cummins
West Valley City, UT 84120

District 9

Joel Wright
Cedar Hills, UT 84062

District 12

Alisa Ellis
Heber City, UT 84032

District 15

Michelle Boulter
St. George, UT 84791

Lorraine Austin

Board Secretary

Acknowledgements

The Utah State Board of Education (USBE) staff would like to express appreciation to the Council of Chief State School Officers (CCSSO) subgroups Assessing Special Education State Collaborative on Assessment and Student Standards (ASES SCASS) and English Language Learners State Collaborative on Assessment and Student Standards (ELL SCASS) for publication of model policies, including the Accommodations Manuals for Students with Disabilities, English Language Learners, and English Language Learners with Disabilities.

The USBE staff appreciates the support, input, and feedback received from local education agency (LEA) groups, including Education Directors (LEAD), Charter School Special Education Directors (CSSPED), and Assessment Directors, Alternative Language Services Directors, and USBE staff across departments. The USBE staff also appreciates the support, input, and feedback received from parents, teachers, and administrators regarding the implementation of a fair, accessible, and appropriate statewide assessment system.

Table of Contents

Utah State Board of Education	2
Acknowledgements	3
Table of Contents	4
1. Definitions	7
1.1. Accommodations	7
1.2. English learners (ELs).....	7
1.3. English learners with disabilities (ELs with disabilities)	7
1.4. IDEA	7
1.5. Resources	7
1.6. Student special needs plans.....	7
1.7. Students with Section 504 plans.....	7
1.8. Students with disabilities (SWD)	7
1.9. Students with special needs.....	7
1.10. Utah Accountability Systems	8
1.11. Utah State Board of Education (USBEL).....	8
2. Introduction	9
2.1. Description	9
2.1.1. Utah’s Accountability Systems	9
2.2. Changes in Policy.....	9
3. Full Participation in Utah’s Assessments	10
3.1. Special Conditions That Warrant Exemption from Statewide Assessment.....	10
3.2. Statewide Assessments—Descriptions/Details	10
3.2.1. Utah Core Standards Assessments.....	10
3.2.2. Alternate Assessments	12
3.2.3. College and Career Readiness Assessments	14
3.3. Other Assessments—Descriptions/Details	15
3.3.1. National Assessment of Educational Progress (NAEP).....	15
3.3.2. Assessing Comprehension and Communication in English State- to-State for English Language Learners (ACCESS for ELLs).....	16
3.3.3. WIDA Screener	17
3.3.4. Kindergarten W-APT.....	17
3.3.5. The American Council on the Teaching of Foreign Languages (ACTFL) Assessment of Performance toward Proficiency in Languages (AAPPL)	18
4. Guidelines for Assessment of Students who are English Learners	19
5. Accommodation and Participation Flowcharts	20
5.1. Statewide Assessments.....	20

5.2. NAEP Participation	21
6. Basic Principles for Selecting, Administering, and Evaluating Accommodations	22
6.1. All Students Participate in Grade-Level Assessments and Achieve Grade-Level Academic Standards	22
6.1.1. Every Student Succeeds Act (ESSA)	23
6.1.2. Individuals with Disabilities Education Improvement Act (IDEA) of 2004	23
6.1.3. Section 504 of the Rehabilitation Act.....	24
6.1.4. Title III of the Elementary and Secondary Education Act.....	24
6.2. Accommodations, Modifications, and Resources for Instruction and Assessment.....	25
6.2.1. Accommodations.....	25
6.2.2. Modifications.....	26
6.2.3. Resources	27
6.2.4. Assessment Accommodations and Resources Overview.....	27
6.2.5. Accommodations and Resources Definitions.....	31
6.2.6. Selecting Accommodations and Resources for Instruction and Assessment for Individual Students	46
6.2.7. Documenting Accommodations on a Student’s IEP.....	47
6.2.8. Documenting Accommodations on a Student’s 504 Plan.....	47
6.2.9. Considering Accommodations for ELs with Disabilities or ELs on Section 504 Plans	48
6.2.10. Involving Students in Selecting, Using, and Evaluating Accommodations/ Resources	48
6.2.11. Determining the Consequences of Assessment Accommodations/ Resources Use	48
6.2.12. Questions to Guide Accommodation/Resources Selection	49
6.2.13. Selecting Accommodations and Resources: Do’s and Don’ts.....	50
6.3. Implementation of Accommodations and Resources During Instruction and Assessment.....	51
6.3.1. Accommodations/Resources During Instruction	51
6.3.2. Accommodations/Resources During Assessment Planning for Test Day	51
6.3.3. Administering Assessments, Accommodations, and Resources.....	51
6.3.4. Ethical Testing Practices.....	52
6.3.5. Standardization	52
6.3.6. Test Security	52
6.4. Evaluating and Improving Accommodation and Resource Use.....	53
6.4.1. Questions to Guide Evaluation of Accommodations Use at the School or LEA Level	53

6.4.2. Questions to Guide Evaluation of Accommodations/Resource Use at the Student Level	53
6.4.3. Post-Secondary Implications	54
7. Appendices	55
Appendix A: Accommodation/Resource Use in the Classroom	55
Appendix B: Participation Criteria for DLM/UAA	56
Appendix C: After-Test Accommodation and/or Resource Questions	58
Appendix D: Assessment Accommodations or Resource Plan.....	59
Appendix E: Logistics Planning Checklist	60
Appendix F: Accommodations/Resources Journal for Teachers.....	62
Appendix G: Identifying Roles and Responsibilities	64
Appendix H: Accommodation and Resources Criteria for ELs with Disabilities and ELs on Section 504 Plans	65
Appendix I: Parent Input on Accommodations and Resources.....	67
Appendix J: ACT Allowable Accessibility Supports (Accommodations and Resources)	68

1. Definitions

The definition of terms is intended to highlight vocabulary used throughout the document.

1.1. Accommodations

Accommodations for assessments are changes in the test administration that do not alter the validity of score interpretation, reliability, or security of the test. These accommodations may be available to students with special needs (e.g., IEP, 504, or EL plans), but not to general education students.

1.2. English learners (ELs)

Students whose native language is not English, and who do not yet possess sufficient English language proficiency to participate effectively in general education classes.

1.3. English learners with disabilities (ELs with disabilities)

Students whose native language is not English and who have been identified through the Individuals with Disabilities Education Act (IDEA) as having a disability.

1.4. IDEA

The Individuals with Disabilities Education Act.

1.5. Resources

Tools that do not alter the validity of score interpretation, reliability, or security of the test. These are available for all students, including general education students and students with special needs.

1.6. Student special needs plans

Plans for students with special needs, such as Section 504 plans and Individualized Education Programs (IEPs).

1.7. Students with Section 504 plans

Students with disabilities who are eligible to receive accommodations through Section 504 of the Rehabilitation Act.

1.8. Students with disabilities (SWD)

Students who meet eligibility criteria for special education and related services, as defined in the IDEA and Utah State Board of Education Special Education Rules (USBE SER).

1.9. Students with special needs

Students with disabilities, students on Section 504 plans, ELs, ELs with disabilities, and ELs on Section 504 plans.

1.10. Utah Accountability Systems

The Utah State Board of Education (USBE) makes annual accountability determinations for schools and Local Education Agencies (LEAs) based on student academic outcomes, growth, English learner progress, equitable educational opportunity, postsecondary readiness, and test participation. All countable and valid assessments are included in the accountability calculations, regardless of a students' special needs status.

Utah also has an Alternative and Special Needs Accountability Report.

1.11. Utah State Board of Education (USBE)

Utah Constitution Article X, Section 3 and Title 53A of the Utah Code describe in detail the specific legal duties of the Board. Among these duties are:

- Appoint the State Superintendent of Public Instruction.
- Adopt administrative rules directed to the whole system.
- Establish minimum standards for public schools. Make rules that establish basic ethical conduct standards for licensed public education employees.
- Define, establish, and implement a core curriculum.
- Maintain general control and supervision over adult education.
- Annually prepare and submit to the Governor and Legislature a budget for the operation of the institutions and agencies under the Board.
- With the State Auditor, set and approve auditing standards for auditors employed by local school boards and charter schools.
- Verify audits of financial and student accounting records of school districts and charter schools for purposes of determining the allocation of Uniform School Fund monies.
- Fulfill statutory responsibility for the management of the Utah State Board of Education staff, [Utah Office of Rehabilitation], and the Utah Schools for the Deaf and the Blind.

2. Introduction

The purpose of this document is to establish statewide policy for the participation of students with special needs in Utah’s accountability systems and to provide guidance on accommodations and resources for use during instruction and statewide assessments. The purposes of the Utah Participation and Accommodations Policy are to:

- Identify avenues for all students to participate in the statewide assessment program.
- Describe procedures that must be used when, in extremely unusual circumstances, a student must be exempted or excused from participation in the statewide assessment program.
- Provide detailed information regarding the valid and appropriate use of accommodations and resources for students participating in the statewide assessment program.

2.1. Description

2.1.1. Utah’s Accountability Systems

The Utah State Board of Education (USBE) makes annual accountability determinations for schools and Local Education Agencies (LEAs) based on student academic outcomes, growth, English learner progress, equitable educational opportunity, postsecondary readiness, and test participation. All countable and valid assessments are included in the accountability calculations, regardless of a students’ special needs status.

For more information on Utah’s accountability systems, see the [Utah Accountability Technical Manual](https://www.schools.utah.gov/file/8654712b-b5c3-4d5e-a470-39734b235b30) located at <https://www.schools.utah.gov/file/8654712b-b5c3-4d5e-a470-39734b235b30>.

Utah also has an alternative accountability system for schools identified as primarily serving alternative and/or special needs students. For more information about Utah’s Alternative and Special Needs School Accountability Report, see the [Utah Accountability Technical Manual](#).

2.2. Changes in Policy

This policy will be reviewed annually and revised as needed, based on research and stakeholder input.

3. Full Participation in Utah’s Assessments

Federal and State laws require that all students enrolled in public schools participate in assessments designed to provide accountability for the effectiveness of instruction in schools. The Utah Code requires an accountability system that includes students with special needs (53A-1-1101 through 1113). School team members, including English learner (EL) teams, Individualized Education Program (IEP) teams, and Section 504 teams, must actively engage in a planning process that addresses:

- The need for accommodations to provide access to grade-level instruction and state assessments, and
- The use of alternate assessments when required to assess the achievement of students who receive instruction based on alternate achievement standards. Alternate achievement standards are specific statements of the content, skills, and grade-level-specific expectations for students with significant cognitive disabilities that are linked to the Utah Core Standards.

All students are expected to participate in the state accountability system, with only a few exceptions as noted below. This principle of full participation includes students who are ELs, students with an IEP, and students with a Section 504 plan. In addition, any student with a physical, emotional, or medical emergency just prior to an assessment may receive accommodations or aid based on individual need.

3.1. Special Conditions That Warrant Exemption from Statewide Assessment

A parent or legal guardian may opt his or her student out of taking an assessment if the parent contacts the local school to request/inform the school that the parent’s student not be tested, consistent with LEA administrative timelines and procedures. When a student is exempted from an assessment, it is only for the immediate administration of the assessment. The student will be included in the next administration of the assessment, or in other assessments administered during the same school year. The reason for the exemption must be documented in the student’s cumulative record. Students not tested due to parent request shall receive a non-proficient score, which shall be used in school accountability calculations.

The student with special needs planning team (IEP, 504, etc.) cannot exempt a student from the statewide testing requirements.

3.2. Statewide Assessments—Descriptions/Details

3.2.1. Utah Core Standards Assessments

3.2.1.1. Student Assessment of Growth and Excellence (SAGE Summative and SAGE Interim)

The SAGE Assessments are aligned with the Utah Core Standards in order to assess students’ knowledge of the state’s academic content standards. The SAGE assessments are computer-adaptive, which means that, based on the student’s responses, SAGE adjusts the difficulty of questions throughout the assessment in order to pinpoint the student’s current level of knowledge. All questions at all difficulty levels presented to a student are aligned to the grade level content standards.

SAGE assessments are administered via computer. All student responses must be submitted via the online system. There is no accommodation that allows for a paper-based submission of a student’s response. Refer to the Test Administration Manuals (TAMs) for specific procedures.

Subject Assessed	Grades/Courses Assessed
English Language Arts (ELA)	3–11*
Mathematics	3–8, Secondary Math I, II, III
Science	4–8, High School—Course Specific

*11th grade participation is an LEA decision for each test.

Additional information regarding SAGE administration may be found at the [Sage Portal](http://sageportal.org) (<http://sageportal.org>).

All students enrolled in the grades/subjects described above are expected to participate in the SAGE Summative assessment for that grade/course, unless the student is receiving instruction based on alternate standards and have been determined eligible for the alternate assessments (Dynamic Learning Maps [DLM] for mathematics and English language arts and Utah’s Alternate Assessment [UAA] for Science). **Students must take the appropriate assessments for their enrolled course.** For assessments that are course-specific, students are expected to enroll in the course that is standard for that grade level (for example, a student in grade 9 must enroll in Secondary Math I or a higher math course). If a lower-grade assessment is administered, the student is considered non-proficient (i.e., a proficiency score of 1 will be assigned).

3.2.1.2. DIBELS

The *Utah K–3 Reading Improvement Act* (53A-17a-150) is created to supplement other school resources to achieve the state's goal of having third graders reading at or above grade level. The Utah State Board of Education (USBE) has designated the Dynamic Indicators of Basic Early Literacy Skills (DIBELS) Next as the benchmark assessment to be administered at the beginning, in the middle, and at the end of grade one, grade two, and grade three to measure the reading competency of students. In addition, LEAs have the option to administer the DIBELS to students in kindergarten.

The USBE has also designated the English Language Arts SAGE assessment as the benchmark reading assessment to be administered at the end of grade three.

Subject Assessed	Grades Assessed
Reading	1–3 (Kindergarten is optional)

DIBELS Alternate Assessment Options for Grades 1–3 are available for students whom DIBELS is not accessible. See Alternate Assessment below for more details.

3.2.1.3. Kindergarten Entry and Exit Profile (KEEP)

Utah’s Kindergarten Entry and Exit Profile (KEEP) is intended to inform various stakeholders such as parents, teachers, and leadership, on the academic and social-emotional development of entering and exiting kindergarten students. The information gained from the profile will be used to:

- Provide insights into current levels of academic and social-emotional performance upon entry and exit of kindergarten.
- Identify students in need of early intervention instruction and promote differentiated instruction for all students.
- Analyze the effectiveness of programs, such as extended-day kindergarten and preschool.
- Provide opportunities for data-informed decision-making and cost-benefit analysis of early learning initiatives.
- Identify effective instructional practices or strategies for improving student achievement outcomes in a targeted manner.
- Understand the influence and impact of full-day kindergarten on at-risk students in both the short- and long-term.

Subject Assessed	Grades Assessed
Literacy, Numeracy, and Social-Emotional	Kindergarten entry (3 weeks prior to or after the beginning of Kindergarten) Kindergarten Exit (Last 4 weeks of Kindergarten)

KEEP Alternate Assessment is available for students with significant cognitive disabilities that cannot access the KEEP even with appropriate accommodations. See Alternate Assessment below for more details.

3.2.2. Alternate Assessments

The Individuals with Disabilities Education Improvement Act of 2004 (IDEA) articulates several requirements related to the assessment of students with disabilities.

All children with disabilities must be included in general State- and district-wide assessment programs, including alternate assessments (§612(a)(16)(a)).

1. The State must develop and implement alternate assessments for those children who cannot participate in regular assessments with accommodations as indicated in their IEP plans (§612(a)(16)(c)).
2. The alternate assessment must be aligned with the State’s challenging academic content standards (the Utah Core Standards), and measure the achievement of students with disabilities against Utah’s alternate academic achievement standards (the Utah Essential Elements and Extended Core Standards for Science) (§612(a)(16)(c)(ii)).
3. The alternate assessment must be valid and reliable for assessing the performance of children with disabilities (§663(b)(2)).
4. Each State must report on the effectiveness of schools, LEAs, and the State in improving the academic achievement of students with disabilities participating in alternate assessments (§664(b)(2)(D)(i)).

The reauthorization of ESEA, as the Every Student Succeeds Act (ESSA), reaffirmed under section 1111(b)(1) of the ESEA, that the alternate assessment is an appropriate assessment for students with the most significant cognitive disabilities to demonstrate their knowledge and skills based on alternate academic achievement standards—AA-AAAS. ESSA has a new provision that limits the total number of students with the most significant cognitive disabilities who are assessed Statewide with an AA-AAAS to 1.0 percent of the total number of students in the State who are assessed in that subject (section 1111(b)(2)(D)(i)(I)).

LEAs must mark the “1% Alternate Assessment” flag in UTREx for the students with significant cognitive disabilities who will be participating in Alternate Assessments.

3.2.2.1. Dynamic Learning Maps (DLM)

The DLM is aligned with the Utah Essential Elements (Utah’s alternate standards aligned with the Utah Core Standards) in order to assess students’ knowledge of the state’s academic content standards. The DLM provides a way for all students with significant cognitive disabilities to demonstrate their learning throughout the school year via the DLM Alternate Assessment System. Traditional multiple-choice testing does not always allow students with significant cognitive disabilities to fully demonstrate their knowledge. The DLM system maps student learning aligned with college and career readiness standards in English language arts and mathematics through Alternate Achievement Standards, the Essential Elements. Students will demonstrate their knowledge of the Essential Elements by participating in a flexible and adaptive year-end assessment.

The DLM system is accessible by students with significant cognitive disabilities, including those who also have hearing or visual disabilities and/or neuromuscular, orthopedic, or other motor disabilities. DLM assessments are flexible and allow for the use of common assistive technologies in addition to keyboard/mouse and touch-screen technology.

The criteria for participation in the DLM Alternate Assessment reflect the pervasive nature of a significant cognitive disability. All content areas should be considered when determining eligibility for this assessment. Thus, a student who participates in the DLM Alternate Assessment participates in this assessment for all content areas.

Subject Assessed	Grades/Courses Assessed
ELA	3–11
Math	3–11

3.2.2.2. Utah Alternate Assessment (UAA)

The UAA is aligned with the Utah Extended Core Standards for Science (Utah’s alternate standards aligned with the Utah Core Standards for Science). The UAA provides a set of assessment tasks with standardized administration procedures and performance criteria, from which the teacher chooses assessment targets for individual students. This system is designed to provide valid annual assessment of important outcomes for students with significant cognitive disabilities.

[Utah’s Alternate Assessment Administration Manual and Assessment Tasks](https://schools.utah.gov/file/88826648-9678-41ce-a5fc-52b325a4af0b) are located at <https://schools.utah.gov/file/88826648-9678-41ce-a5fc-52b325a4af0b>.

Subject Assessed	Grades/Courses Assessed
Science	4–12

3.2.3. College and Career Readiness Assessments

The Utah Code requires that secondary students participate in a college readiness assessment (53A-1-611). A college readiness assessment includes a college admissions test that provides an assessment of language arts, mathematics, and science. The Utah college readiness assessment must be commonly used by local universities to assess student preparation for college. A student with an IEP may take an appropriate college readiness assessment other than the tests adopted by the USBE, as determined by the student’s IEP team.

3.2.3.1. ACT

The USBE has designated the ACT as the assessment that will be used for accountability measures for school year 2017–2018, and is also designated as the college readiness assessments that must be administered to Utah students in grade 11. The ACT is a national college admissions examination that consists of subject area tests in English, mathematics, reading, and science. ACT results are accepted by all four-year colleges and universities in the U.S.

Subjects Assessed	Grades Assessed
English Mathematics Reading Science	11

ACT has established policies regarding documentation of disability and the process for requesting accommodations for the ACT. For more information about specific accommodations and their appropriateness for this assessment, contact the LEA Assessment Director, visit the [Utah ACT website](https://www.act.org/content/act/en/public-affairs/state-organizations/utah.html) (<https://www.act.org/content/act/en/public-affairs/state-organizations/utah.html>), and see Appendix J.

3.2.3.2. Armed Services Vocational Aptitude Battery (ASVAB)

ASVAB is a nationally normed, multi-aptitude test series that provides high school students with a gauge to measure their academic and occupational readiness. The career information program section encourages students to explore a wide variety of careers.

There are nine subject/content areas that are tested with the ASVAB:

Subjects	Grades/Courses Assessed
General Science Arithmetic Reasoning Word Knowledge Paragraph Comprehension Mathematics Knowledge Electronics Information Auto and Shop Information Mechanical Comprehension Assembling Objects	11 or 12

Some accommodations are available for the ASVAB. For more information about specific accommodations and their appropriateness for this assessment, contact the LEA Assessment Director.

3.3. Other Assessments—Descriptions/Details

3.3.1. National Assessment of Educational Progress (NAEP)

The NAEP is the largest nationally-representative and continuing assessment of what students know and can do in various subject areas. Assessments are conducted periodically in the areas of mathematics, reading, science, writing, the arts, civics, economics, geography, U.S. history, technology, and engineering literacy. NAEP assessments are administered uniformly across the nation, and therefore serve as a common metric for all states. The NAEP assessment remains essentially the same from year to year, allowing an evaluation of student academic progress over time.

Schools are selected to participate in NAEP assessments using a stratified random sampling process. This process means that not all students will experience the NAEP assessment. All students with disabilities enrolled in Utah schools selected for NAEP assessments are expected to participate, unless the student is receiving instruction based on alternate standards and is eligible for the alternate assessment (DLM/UAA).

The participation of each school and student selected helps ensure that NAEP truly reflects the diversity of our nation's student population. For example, NAEP reports results for male and female students, students in different regions of the country, and students with different racial and ethnic backgrounds. The school (including the IEP team) may not exclude a student with disabilities from participation in NAEP assessments.

Year	Subject	National Grades Assessed	State Grades Assessed	TUDA Grades Assessed
2014	U.S. History*	8		
	Civics*	8		
	Geography*	8		
	Technology and Engineering Literacy	8		

Year	Subject	National Grades Assessed	State Grades Assessed	TUDA Grades Assessed
2015	Reading*	4, 8, 12	4, 8	4, 8
	Mathematics*	4, 8, 12	4, 8	4, 8
	Science**	4, 8, 12	4, 8	
2016	Arts*	8		
2017	Reading	4, 8	4, 8	4, 8
	Mathematics	4, 8	4, 8	4, 8
	Writing	4, 8, 12		
2018	U.S. History	8, 12		
	Civics	8, 12		
	Geography	8, 12		
	Technology and Engineering Literacy	8		
2019	Reading	4, 8, 12	4, 8	4, 8
	Mathematics	4, 8, 12	4, 8	4, 8
	Science	4, 8, 12		
	High School Transcript Study			
2020	Long-term Trend			
2021	Reading	4, 8	4, 8	4, 8
	Mathematics	4, 8	4, 8	4, 8
	Writing	4, 8, 12	8	
2022	U.S. History	8, 12		
	Civics	8, 12		
	Geography	8, 12		
	Economics	12		
	Technology and Engineering Literacy	8, 12		
2023	Reading	4, 8, 12	4, 8	4, 8
	Mathematics	4, 8, 12	4, 8	4, 8
	Science	4, 8, 12	4, 8	4, 8
	High School Transcript Study			
2024	Arts	8		
	Foreign Language	12		

Many accommodations are available for NAEP assessments. For more information about specific accommodations and their appropriateness for this assessment, contact the LEA Assessment Director.

3.3.2. Assessing Comprehension and Communication in English State-to-State for English Language Learners (ACCESS for ELLs)

ACCESS for ELLs 2.0 is an online assessment of English language proficiency administered annually to all students who have been identified as English learners (ELs) and who receive services in an English language acquisition program to assess English language proficiency. Students with disabilities who have also been identified as ELs are not exempt from participation in the ACCESS assessment.

The Alternate ACCESS for ELLs is a one-on-one administered English language proficiency assessment for students in grades K–12 who are classified as ELs and have a significant cognitive disability that prevent their meaningful participation in the regular ACCESS for ELLs 2.0 assessment. Students who are instructed using alternate standards (Essential Elements or Extended Core Science Standards) are eligible to participate in the Alternate ACCESS for ELLs.

Assessment Domain	Grades Assessed
Listening	K–12
Speaking	K–12
Reading	K–12
Writing	K–12

Many accommodations are available for students taking the ACCESS for ELLs assessment. For more information about specific accommodations and their appropriateness for this assessment, please see the [WIDA Accessibility and Accommodations Supplement](https://www.wida.us/assessment/access%202.0/documents/AccessibilityandAccommodationsSupplement.pdf) (<https://www.wida.us/assessment/access%202.0/documents/AccessibilityandAccommodationsSupplement.pdf>) or contact the LEA Assessment Director.

3.3.3. WIDA Screener

The WIDA Screener is an English language proficiency screener assessment given to newly enrolled students who may be designated as English learners as indicated by the home language survey completed on enrollment. It assists educators with programmatic placement decisions such as identification and placement of ELs. The WIDA Screener is one component of WIDA's comprehensive assessment system. WIDA Screener Online should be administered to students in grades 1–12 who may be designated as English learners. WIDA Screener Paper administration is recommended for students who have recently arrived to the U.S. or for students with significant disabilities. WIDA Screener assesses the following domains of language in English:

Assessment Domain	Grades Assessed
Listening	1–12
Speaking	1–12
Reading	1–12
Writing	1–12

3.3.4. Kindergarten W-APT

The Kindergarten W-APT is meant to be administered to second semester pre-kindergarten, kindergarten, and first semester first grade students. It is organized as a single, individually-administered test with a combined Speaking/Listening component. The Reading and Writing tests make up a separate test which is optional, and only for students with some literacy skills.

Many accommodations are available for students taking the WIDA Screener assessment. For more information about specific accommodations and their appropriateness for this assessment, contact the LEA Assessment Director.

3.3.5. The American Council on the Teaching of Foreign Languages (ACTFL) Assessment of Performance toward Proficiency in Languages (AAPPL)

The ACTFL Assessment of Performance toward Proficiency in Languages (AAPPL) measure is a performance assessment of Standards-based language. It is a language assessment for students learning a world language to assess students' ability to engage in linguistic tasks that consists of four components:

Assessment Components
Interpersonal Speaking
Presentational Writing
Interpretive Reading
Interpretive Listening

Many accommodations are available for student taking the AAPPL assessment. For more information about specific accommodations and their appropriateness for this assessment, contact the LEA Assessment Director.

4. Guidelines for Assessment of Students who are English Learners

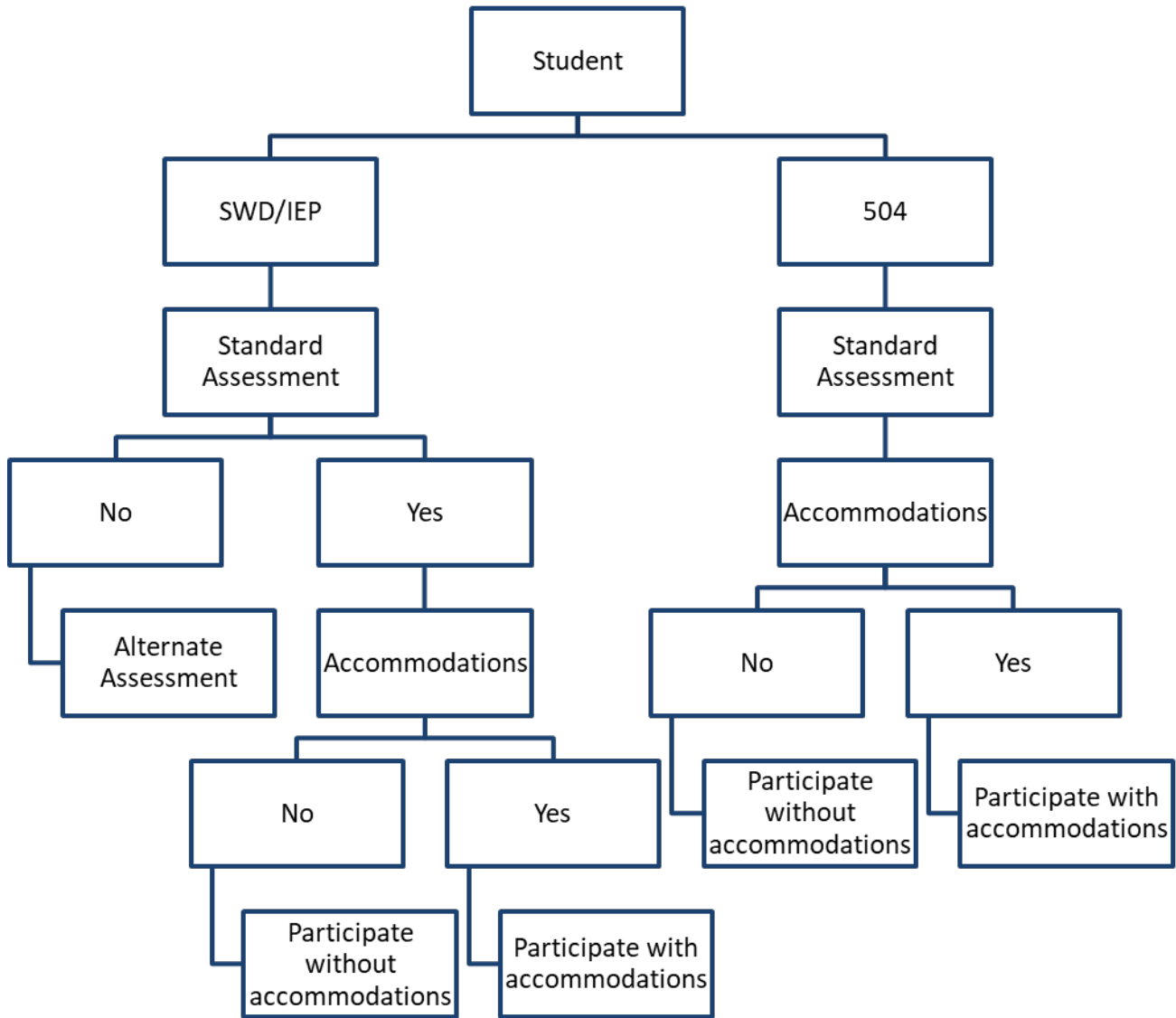
ELs who have been enrolled in a school in the United States less one year may be exempt from some assessments. ELs who have been enrolled in a school in the United States less than three years are exempt from some indicators of accountability.

1. ELs enrolled **on or after April 15 of the current school year** and who are new to the United States (first year of enrollment in any U.S. school) are exempt from all statewide assessment.
2. ELs enrolled **before April 15 during the current school year or after April 15 of the previous school year** and who are new to the United States (first year of enrollment in any U.S. school) must take:
 - ACCESS for ELLs.
 - Math SAGE Summative (counted for participation only; scores are not calculated for accountability reports).
 - Science SAGE Summative (counted for participation only; scores are not calculated for accountability reports).
 - English Language Arts SAGE Summative (counted for participation only; scores are not calculated for accountability reports).
3. EL students enrolled before April 15 of the previous school year must take:
 - ACCESS for ELLs.
 - Math SAGE Summative (counted for participation and growth only; scores are not calculated for achievement).
 - Science SAGE Summative (counted for participation and growth only; scores are not calculated for achievement).
 - English Language Arts SAGE Summative (counted for participation and growth only; scores are not calculated for achievement).
4. EL students enrolled **three or more years** are included in all statewide accountability calculations and must take:
 - ACCESS for ELLs.
 - ELA SAGE Summative.
 - Math SAGE Summative.
 - Science SAGE Summative.
 - DIBELS (if enrolled in grades 1–3).

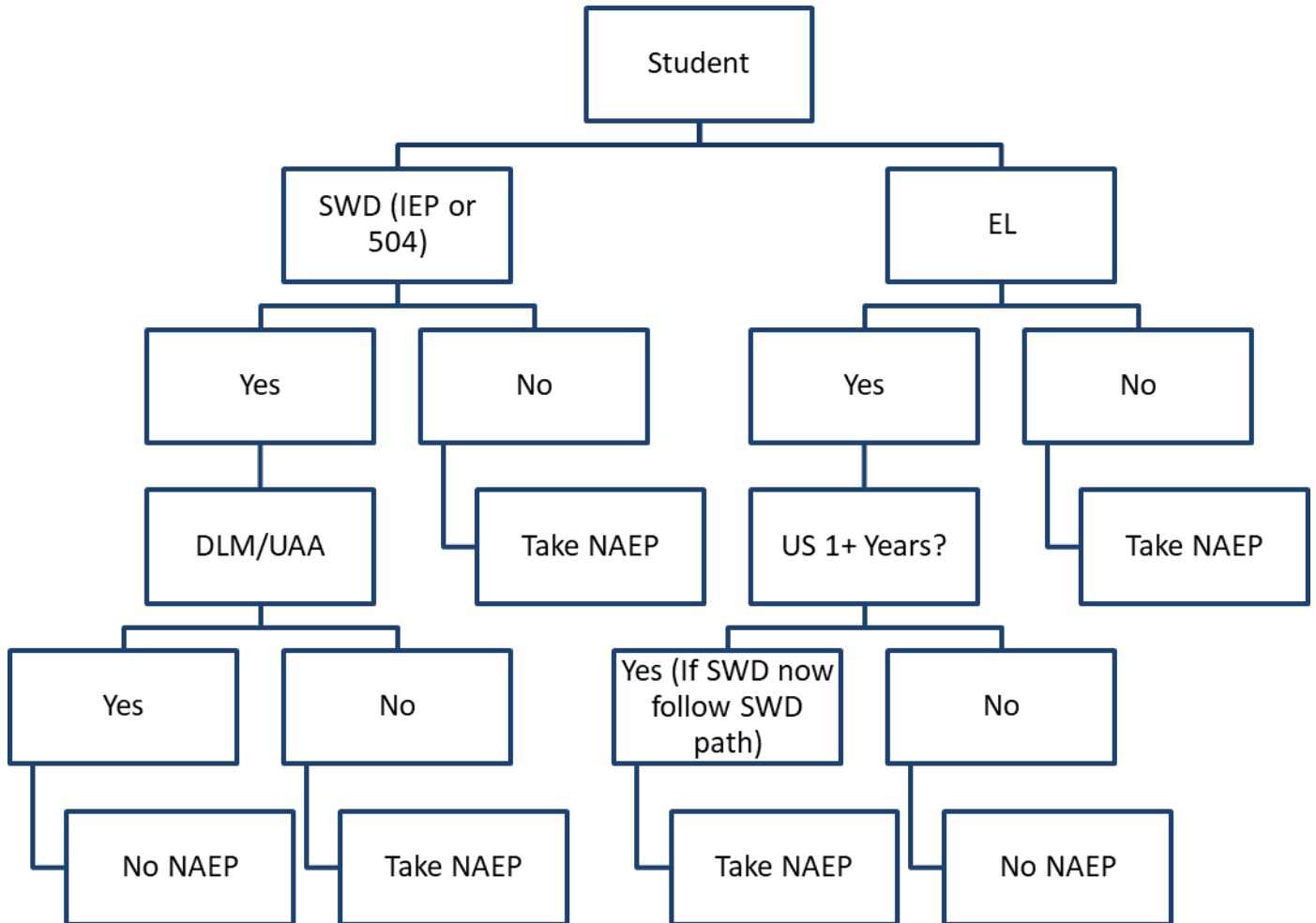
Note: Foreign exchange students take the SAGE assessment for the courses in which they are enrolled and are not included in any accountability calculations.

5. Accommodation and Participation Flowcharts

5.1. Statewide Assessments



5.2. NAEP Participation



6. Basic Principles for Selecting, Administering, and Evaluating Accommodations

School teams must carefully consider the selection, administration, and evaluation of accommodations for students with special needs. To assist with that process, users should examine the philosophical foundation outlined below. This foundation is built upon a five-step process for planning teams selecting accommodations for students with special needs.

The five essential steps are:

1. Expect students to participate in grade-level assessments and achieve grade-level academic content standards.
2. Learn about accommodations and resources for instruction and assessment.
3. Select accommodations and resources for instruction and assessment as needed for individual students.
4. Ensure that access is provided for accommodations and resources during instruction and assessment.
5. Evaluate and improve accommodation use for instruction and assessment.

6.1. All Students Participate in Grade-Level Assessments and Achieve Grade-Level Academic Standards

The achievement of students with special needs is heavily influenced by the expectations of educators and parents. To support students in their long-term goals for success in adult life, including educational and employment goals, the school team must hold the expectation that every student will be taught and assessed based on grade-level standards.

With the focus of legislation on accountability and the inclusion of all students comes the drive to ensure equal access to grade-level content standards. Academic content standards are educational targets for students to learn at each grade level. Teachers ensure that students' progress toward grade-level content standards by using a range of instructional strategies based on the varied strengths and needs of students. Providing accommodations during instruction and assessment promotes equal access to grade-level content. To accomplish this goal of equal access:

- Every team member must know and understand the Utah Core Standards.
- Every team member must be familiar with accountability systems at the state and LEA level.
- Educators must collaborate in order to maximize equal access to grade-level content standards for all students.

All students with special needs can access grade-level academic content standards, and most students are able to demonstrate growth in achievement on grade-level standards when the following three conditions are met:

1. Instruction is provided by teachers who are qualified to teach in the content areas addressed by the Utah Core Standards and who know how to differentiate instruction for diverse learners.

2. Special needs student plans are carefully designed to ensure all students have access to grade-level standards, with services and supports as needed.
3. Appropriate accommodations, services, and supports are provided to help students' access grade-level content.

The impact that high expectations can have on student success is expressed in Federal and State laws requiring schools to include students with special needs in grade-level instruction and to assess the academic achievement of these students. While these laws vary for students with different types of needs, the core principles remain: public education is available to all students, schools must provide quality instruction to all students, and schools are accountable to demonstrate achievement and improvement for all students.

6.1.1. Every Student Succeeds Act (ESSA)

ESSA reauthorizes the Elementary and Secondary Education Act (ESEA), the nation's national education law and longstanding commitment to equal opportunity for all students. ESSA aligns with existing tenets of USBE's Strategic Plan and state law. It offers flexibility to use ESSA funding to achieve education equity, improve quality learning, and advance system values. ESSA funding will help Utah improve educational outcomes for students.

ESSA's requirements concerning students with disabilities are very similar or the same to those of ESEA. ESEA expressed a national expectation that schools are accountable to the public for the educational achievements of all students. ESEA explicitly called for all students to participate in assessments in order to meet this expectation of accountability (Sec. 1111 (3) (C) (i)). ESEA also requires that assessments provide reasonable adaptations and accommodations for students with disabilities in order to measure the academic achievement of students on grade-level standards (Sec. 1111 (3) (C)(ii)).

The Utah State Board of Education (USBE) submitted its proposed Every Student Succeeds Act (ESSA) plan on September 18, 2017. Utah is awaiting approval from the United States Department of Education on the plan. The Department of Education has until January 16, 2018 to make a determination.

6.1.2. Individuals with Disabilities Education Improvement Act (IDEA) of 2004

The IDEA specifically governs services provided to students with disabilities. Accountability at the individual level is provided through IEPs developed on the basis of each student's unique needs. Accountability at the school and state level is provided through participation in the statewide assessment system. The IDEA requires the participation of students with disabilities in state and district-wide assessments. Specific IDEA requirements include:

Children with disabilities are included in general state- and district-wide assessment programs, with appropriate accommodations, where necessary (Sec. 612 (a) (16) (A)). The term "individualized education program" or "IEP" means a written statement for each child with a disability that is developed, reviewed, and revised in accordance with this section and that includes . . . a statement of any individual modifications in the administration of state- or district-wide assessments of student achievement that are needed in order for the child to participate in

such assessment; and if the IEP Team determines that the child will not participate in a particular state- or district-wide assessment of student achievement (or part of such an assessment), a statement of why that assessment is not appropriate for the child; and how the child will be assessed (Sec. 614 (d) (1) (A) (V) and VI)).

Section §300.160 Participation in assessments.

(a) General. A State must ensure that all children with disabilities are included in all general State and district-wide assessment programs, including assessments described under section 1111 of the ESEA, 20 U.S.C. 6311, with appropriate accommodations and alternate assessments, if necessary, as indicated in their respective IEPs.

6.1.3. Section 504 of the Rehabilitation Act

Section 504 provides individuals with disabilities with certain rights and protects individuals with disabilities against discrimination from federally-funded programs and activities. Section 504 states that:

No otherwise qualified individual with a disability in the United States, as defined in section 705(20) of this title, shall, solely by reason of her or his disability, be excluded from the participation in, be denied the benefits of, or be subjected to discrimination under any program or activity receiving Federal financial assistance or under any program or activity conducted by any Executive agency. (29 U.S. Code § 794—Nondiscrimination under Federal grants and programs)

In school settings, Section 504 legislation guarantees and protects students with disabilities who do not have an IEP, but are still considered individuals with disabilities. The definition of a student with disabilities is much broader under Section 504 than it is under IDEA. An important part of the Section 504 plans developed by schools for students with disabilities is a description the specific accommodations that the student can utilize on assessments.

6.1.4. Title III of the Elementary and Secondary Education Act

Title III of the ESEA mandates that all students who are learning English receive quality instruction for learning both English and grade-level academic content. According to ESSA, students who are learning English are required to participate in annual statewide assessments that measure students' English language and academic progress. States are allowed to choose flexible programs of instruction and assessment tools in order to increase accountability for students who are learning English academic achievement.

The ESSA requires that states develop standards for English language proficiency in the context of each state's Academic Content Standards. Schools and LEAs must ensure students' who are learning English participation in the state accountability system and provide for:

The inclusion of English learners, who shall be assessed in a valid and reliable manner and provided appropriate accommodations on assessments administered to such students under this paragraph, including, to the extent practicable assessments in the language and form most

likely to yield accurate data on what such students know and can do in academic content areas, until such students have achieved English language proficiency, (PL 114-95, 2015, p. 26).

Rights of ELs with disabilities for equitable inclusion in instruction and assessment processes are also outlined in a number of EL-related federal laws and regulations, as well as certain legal decisions in conjunction with the Office of Civil Rights (OCR). These educational protections and supports for ELs include the ESEA, as well as the Supreme Court cases *Lau v. Nichols* (1974) and *Castañeda v. Pickard* (1981).

The following are some other ESSA provisions for students who are learning English:

- All students who are students learning English must be tested for English proficiency annually.
- All students who are learning English must take state academic achievement tests in language arts and mathematics, may be excluded from proficiency calculations in their second year of enrollment, and must be included in proficiency and growth calculations in their third year of enrollment
- Students who are learning English should be assessed in a valid and reliable manner and provided reasonable accommodations.
- Students who are learning English as a group must make adequate progress toward English proficiency each year; schools, LEAs, and the State are held accountable for ensuring that these targets are met.
- Language instruction curricula must be evidence-based and effective for students who are learning English.
- Local entities have the flexibility to choose the method of instruction to teach students who are learning English.
- States must establish standards and objectives for raising the level of English proficiency within the four recognized domains of speaking, listening, reading, and writing. Standards for English proficiency must be aligned with achievement of the challenging State academic content and student academic achievement standards. Utah, as part of the WIDA Consortium, has adopted WIDA standards and assessments for English learners.

6.2. Accommodations, Modifications, and Resources for Instruction and Assessment

6.2.1. Accommodations

Accommodations are practices and procedures that provide equitable access during instruction and assessments for students with disabilities that do not alter the validity, score interpretation, reliability, or security of the assessment.

Accommodations are intended to reduce or even eliminate the effects of a student's disability; they do not reduce learning expectations. The accommodations provided to a student should be the same for classroom instruction, classroom assessments, and LEA and State assessments. It is critical to note that although some accommodations may be appropriate for instructional use, they may not be appropriate for use on a standardized assessment. For example, providing a spell check on a spelling

assessment item or providing a calculator on a math item designed to assess a student's computation skill would alter the validity, score interpretation, reliability, or security of the assessment.

It is very important for educators to become familiar with state policies regarding accommodations during assessments. Accommodations should be provided routinely for instruction and assessment during the school year in order to be used for state assessments. Students should take advantage of computer-based training tests to be familiar with how accommodations will be made available on computer-based assessments.

In the area of accommodations, research indicates that more is not necessarily better, and that providing students with accommodations that are not truly needed may have a negative impact on performance. The most appropriate approach to accommodations is to focus on students' identified needs within the general education curriculum. Typically, accommodation use does not begin and end in school. Students who use accommodations will generally also need them at home, in the community, and, as they get older, in post-secondary education and at work. Accommodations for instruction and assessment are integrally intertwined.

Recent and ongoing advances in assistive technologies are changing the ways in which many accommodations may be provided, and some tools that once were available only as accommodations are now available to all students. As states move to providing assessments on computer-based platforms, the IEP team must take care to ensure that students have opportunities to become familiar with the technological aspects of the assessment process. In addition to taking training assessments using the same platform, it is also important for educators to provide opportunities for all students to use technology for learning and in formative assessment activities as well.

6.2.2. Modifications

Modifications are changes in the assessment conditions that fundamentally alter the test score interpretation and comparability. Accommodations do not reduce learning expectations; they provide access. However, modifications or alterations refer to practices that change, lower, or reduce learning expectations. Modifications can increase the gap between the achievement of students with special needs and expectations for proficiency at a particular grade level. Using modifications may have implications that could adversely affect students throughout their educational career. Examples of modifications include:

- Providing a student with a tool (e.g., spell-checker, calculator) for an instructional activity or assessment item when this tool changes the underlying skill or concept being taught or assessed.
- Requiring a student to learn less material (e.g., fewer objectives, shorter units or lessons).
- Reducing assignments and assessments so a student only needs to complete the easiest problems or items.
- Revising assignments or assessments to make them easier (e.g., crossing out half of the response choices on a multiple-choice test so that a student only has to pick from two options instead of four).

- Giving a student hints or clues to correct responses on assignments and tests.

Providing modifications to students during classroom instruction and/or classroom assessments may have the unintended consequence of reducing their opportunity to learn critical content. If students have not had access to critical, assessed content, they may be at risk for not meeting graduation requirements.

Providing a student with a modification during a state accountability assessment may constitute a test irregularity and/or an ethics violation, and may result in an investigation into the school's or LEA's testing practices. If a student is administered a modified assessment, the student may be considered non-proficient and recorded as a non-participant at the school and LEA levels.

6.2.3. Resources

Resources are universally designed best practices that are provided for all students, including students in general education and students with special needs. Scratch paper, extended time, breaks, and use of an alternative location are examples of resources which may be used by all students.

6.2.4. Assessment Accommodations and Resources Overview

Resources for All Students (Table 1): These are accessibility features and/or accommodations and/or modifications within each assessment, which vary for each assessment, that are allowed for all students who are participating in the specific assessment (e.g. SAGE, DIBELS, NAEP). The student must have access to the desired resource throughout the year during classroom instruction so he/she may become familiar with the feature prior to the administration of the assessment.

Accommodations (Table 2): Features that are provided for students with disabilities who require the use of the accommodation(s) to help them participate in the given assessment. The graph on the next page has the USBE verification/notification expectations when choosing to provide an accommodation. This ensures that the student will be effectively provided with the necessary accommodation. See each individual assessment test administration manuals (TAMs) for how to mark accommodations for the various assessments.

Additional Accommodations Information (Table 3): Assessments the DLM, ACT, and ASVAB have accommodations similar and/or different from what is listed in Tables 1 and 2. This table will give specific directions for where to find more accommodation information pertaining to the listed assessments.

Exceptional Accommodations Request: If an IEP team has designated an accommodation needed for a student to receive FAPE and that accommodation is not found in the tables below or is not an accommodation typically used/allowed please notify the USBE prior to using that accommodation on a statewide assessment.

It is important to note that some resources from Table 1 may be considered accommodations or modifications depending on the various assessment.

Table 1—Resources for all Modifications and Accommodations

Accessibility Feature/resource	SAGE Summative	DIBELS	ACCESS for ELLs/Screeners	NAEP	AAPPL	KEEP
Alternate location	Allowed	Allowed	Allowed	Allowed	Allowed	Allowed
Assistive communication devices	Allowed	Allowed	Allowed	Not Allowed	Allowed (contact LEA Accommodation Coordinator)	Allowed Accommodation
Audio amplification	Allowed	Allowed	Allowed	Allowed	Allowed	Allowed Accommodation
Breaks	Allowed	Allowed	Allowed	Allowed	Allowed	Allowed
Calculation devices and computation tables	Embedded (grades 7 th and up)	NA	NA	Provided if applicable	NA	NA
Change order of activities	Allowed	Allowed	Listening must be administered first	Not allowed	Allowed	Allowed Accommodation
Color adjustments	Embedded	±Allowed accommodation	Allowed	Allowed	Allowed	NA
Descriptive audio	Embedded—must be	NA	NA	Allowed	NA	NA
*Directions—oral translation	Allowed for EL	Allowed for EL	Allowed for EL	Allowed for EL	Allowed for EL	Allowed for EL
*Directions—reread	Embedded as a text-to-speech	Allowed for some subtests—see DIBELS guidelines	Allowed	Allowed	Embedded	Allowed
*Directions—signed	Allowed with certified interpreter	Allowed with certified interpreter	Allowed with certified interpreter	±Allowed accommodation	Allowed with certified interpreter	Allowed with certified interpreter
Environment change	Allowed	Allowed	Allowed	Allowed	Allowed	Allowed
Extended time	Allowed	Not allowed for timed subtests	Allowed	±Allowed accommodation	Not Allowed	NA
Graphic organizer	Not allowed	NA	NA	Allowed	NA	NA
Highlight	Embedded	Not allowed	Not allowed	Allowed	Not Allowed	Allowed

Accessibility Feature/resource	SAGE Summative	DIBELS	ACCESS for ELLs/Screeners	NAEP	AAPPL	KEEP
Human reader	Not Allowed	Not allowed	Allowed for directions and listening passages	±Allowed accommodation	Allowed for directions only	NA
Magnification	Embedded	Allowed	Allowed	Allowed	Allowed	Allowed
Minimize distractions	Allowed	Allowed	Allowed	Allowed	Allowed	Allowed
Blank scratch paper and graph paper	Allowed	NA	Allowed	Embedded	Allowed	NA
Spell check	Embedded	NA	Not allowed	Available on DBA; not available on paper test	Not Allowed	NA
Strikethrough	Embedded	Not allowed	Not allowed	Allowed	Not Allowed	NA
Text-to-speech	Embedded	NA	NA	Embedded	Not Available	NA

**Directions are only non-item content that appears at the beginning of the test or between testing sessions. It does not refer to “directions,” meaning the item’s stem, directions for answering a specific question, etc.*

± considered an accommodation for this specific assessment only

Table 2—Accommodations

Accommodation	SAGE Summative	DIBELS	ACCESS for ELLs/W-APT	NAEP	AAPPL	KEEP
Braille (tactile graphics for students who are blind)	Allowed	Allowed	Allowed	Allowed	NA (computer based test) Use human readers	Allowed
Calculation device and computation table	6 th grade—handheld allowed during calculator section only	NA	NA	Allowed on calculator section	NA	Not Allowed
Large print paper	Allowed	Allowed	Order from USBE	Allowed	NA (computer based test) Increase resolution on screen.	Allowed
Scribe	Allowed (Notify USBE)	NA	NA	Allowed	Allowed for some components	Not Allowed
Sign language	Allowed with certified interpreter (see guidelines on the State website)	Use alternate assessment	Allowed for directions/ listening passages. Interpreter must be ASL certified.	Allowed	Allowed for appropriate components	Allowed
Standard size paper	Allowed	Allowed	Allowed—order from vendor	Allowed	NA	Allowed
Visual Representation	Allowed	NA	NA	NA	NA	Allowed (embedded)
Attention Marker or Ruler	NA	Allowed	NA	NA	NA	Allowed

Table 3—Additional Accommodations Information

Assessment	Accommodations
ACT	Accessibility supports and accommodations table can be found in Appendix J.
ASVAB	Contact LEA Accommodations Coordinator.
DLM/UAA	Accommodations are based on IEP team decisions for individual student needs and are provided in the DLM assessment with great flexibility.

6.2.5. Accommodations and Resources Definitions

In this section are the definitions of each accommodation and/or resource for all students in specific assessments. Special needs plan teams are responsible to identify the resources, accommodations, or modifications that are required for instruction and assessment. However, each assessment must identify which resources and accommodations are allowed within the assessment in order to accurately measure student knowledge and skill for the specific concepts being assessed. The special needs plan team may not “override” the requirements for any specific assessment. If a resource or accommodation is provided for an assessment that is not allowed, the assessment is invalid. The student is considered non-proficient on that assessment, and is reported as a non-participant.

6.2.5.1. Alternate Location

In some circumstances, distractions for an individual student or for a group of students can be reduced by altering the location in which an individual student interacts with instructional materials or test content. For students who are easily distracted by the presence of other students, an alternate location allows students to work individually or in small groups. Changes may also be made to a student’s location within a room, such as away from windows, doors, or pencil sharpeners. Sitting near the teacher’s desk or in the front of a classroom may be helpful for some students. Physically enclosed classrooms (classrooms with four walls) may be more appropriate than open classrooms, and study carrels might also be helpful. Some students may benefit from being in an environment that allows for movement, such as being able to walk around.

The use of some accommodations, such as sign interpreter or scribe, can distract other students which could require an alternate location for the student receiving the accommodation. In addition, some students may perform better when they can read content aloud and think out loud or make noises that may be distracting to other students. To reduce distractions to other students when these strategies and/or accommodations are provided, an alternate location must be employed. A student assessed in an alternate location needs a proctor supervising the assessment at all times.

- **ACT and ASVAB:** Contact LEA Accommodations Coordinator.
- **AAPPL:** Allowed for all students.
- **DIBELS:** Allowed for all students.
- **NAEP:** Allowed for all students.
- **KEEP:** Allowed for any student.
- **SAGE:** Allowed for all students.

- **DLM:** Allowed.
- **UAA:** Depends on the student and task.
- **ACCESS for ELLs/W-APT:** Allowed for all students.

6.2.5.2. Assistive Communication Devices

For students who have difficulty manipulating a mouse or standard keyboard, there are a variety of assistive communication devices that allow them to control a computer program and record responses. These assistive communication devices include items such as Intellikeys, sip-and-puff devices, single-switch devices, eye tracking devices, and touch screens.

- **ACT and ASVAB:** Contact LEA Accommodations Coordinator.
- **AAPPL:** Allowed and contact LEA Accommodation Coordinator.
- **DIBELS:** Allowed for all students.
- **NAEP:** Not allowed for any student.
- **KEEP:** Allowed Accommodation for students if designated in the IEP.
- **SAGE:** Allowed for all students (Review technical specifications to verify which devices may be used).
- **DLM:** Depends on the needs of the student.
- **UAA:** Depends on the student and task.
- **ACCESS for ELLs/W-APT:** Allowed.

6.2.5.3. Attention Marker or Ruler

The use of a marker or ruler to focus student attention on the materials for students who are not able to demonstrate their skills adequately without one. It is good practice to attempt the task or assessment first without a marker or ruler and then reattempt or retest with an alternate form using a marker or ruler if needed.

- **ACT and ASVAB:** Not applicable for any student.
- **AAPPL:** Not applicable for any student.
- **DIBELS:** Allowed Accommodation for students if designated in the IEP.
- **NAEP:** Not applicable for any student.
- **KEEP:** Allowed Accommodation for students if designated in the IEP.
- **SAGE:** Not applicable for any student.
- **DLM:** Depends on the needs of the student.
- **UAA:** Depends on the student and task.
- **ACCESS for ELLs/W-APT:** Not applicable for any student.

6.2.5.4. Audio Amplification

Some students may require audio amplification devices in addition to hearing aids to increase clarity. A teacher may use an amplification system when working with students in classroom situations that contain a great deal of ambient noise.

- **ACT and ASVAB:** Contact LEA Accommodations Coordinator.
- **AAPPL:** Allowed for all students.
- **DIBELS:** Allowed for all students.
- **NAEP:** Allowed for all students.
- **KEEP:** Allowed Accommodation for students if designated in the IEP.
- **SAGE:** Allowed for all students.
- **DLM:** Depends on the needs of the student.
- **UAA:** Depends on the student and task.
- **ACCESS for ELLs/W-APT:** Allowed.

6.2.5.5. Braille/Screen Reader for Students Who Are Blind or Visually Impaired

Braille is a method of reading a raised-dot code with the fingertips. Not all students who are blind or visually impaired read braille fluently or choose braille as their primary mode of reading. Even if they use braille as their primary mode of reading, students should also build skills in using electronic formats, such as audio recordings and synthesized speech.

Tactile graphic images provide graphic information through fingers instead of eyes. Graphic material (e.g., maps, charts, graphs, diagrams, illustrations) is presented in a raised format. Tactile sensitivity (recognizing graphic images through touch) is less discriminating than visual reading, making many diagrams too complicated to understand without significant additional information. Braille and/or tactile graphics may be used for instruction and assessment. Auditory descriptions of graphics may be available on assessments.

Screen reading software, which includes both text and graphics description for students who are blind or visually impaired, can be used for instruction or assessment. Some screen readers, such as JAWS, are developed for computer users whose vision loss prevents them from seeing screen content. A refreshable braille display or braille terminal is an electro-mechanical device for displaying braille characters, usually by means of raising dots through holes in a flat surface. Computer users who are blind or visually impaired may use refreshable braille to read text output. Some students may need human assistance to enter responses, which is allowed for students with this accommodation.

- **ACT and ASVAB:** Contact LEA Accommodations Coordinator.
- **AAPPL:** Not applicable for any student; computer-based test, use human readers.
- **DIBELS:** Accommodation. Order braille from USBE staff for student with disabilities.
- **NAEP:** Accommodation. Available for students with disabilities.

- **KEEP:** Allowed Accommodation for students if designated in the IEP.
- **SAGE:** Accommodation. Braille/tactile graphics and embossing are available on request for students with disabilities with USBE staff authorization. Text and graphics may be provided via a Tiger embosser in the student’s school, which can print text and/or graphics depending on student need. Refreshable braille is generated by JAWS. This accommodation is provided at the time of test administration, which means that educators must allow extra time for each item to be embossed as the items are generated by the computer-adaptive assessment. Training tests should be used to ensure that local configurations for embossing can successfully produce the braille assessment.
- **DLM:** Depends on the needs of the student.
- **UAA:** Depends on the student and task.
- **ACCESS for ELLs/W-APT:** Accommodation.

6.2.5.6. Breaks

Breaks may be given if needed. The administrator of the assessment must monitor the length and timing of breaks so that students do not have opportunity to seek answers to items on the assessment.

- **ACT and ASVAB:** Contact LEA Accommodations Coordinator.
- **AAPPL:** Allowed for all students.
- **DIBELS:** Allowed between subtests for all students.
- **NAEP:** Allowed for all students.
- **KEEP:** Allowed for all students.
- **SAGE:** Allowed for all students.
- **DLM:** Depends on the needs of the student.
- **UAA:** Depends on the student and task.
- **ACCESS for ELLs/W-APT:** Allowed.

6.2.5.7. Calculation Devices and Computation Tables

All students are allowed to use an online calculation device when it is embedded during the allowed segments of the assessments. For students in grades 7–12, if the student requires a handheld calculation device or printable computation table, he/she can be provided with that resource during the allowed segment of the assessment. For students in grade 6, the use of a handheld calculation device or printable computation table is considered an accommodation and may be provided (based on need documented in the IEP) during the allowed segment of the assessment. For students in grades 3–5, the use of a handheld calculation device is not allowed during any segment of the math assessment. If provided, the test must be reported as modified, and the student will receive a score of non-proficient and be considered a non-participant.

During instruction, it is important to determine whether the use of a calculation device or computation table is a matter of convenience or a necessary accommodation. It is also important to know the goal

of instruction and assessment before making decisions about the use of calculation devices or computation tables. In some cases, calculators may be adapted with large keys or voice output (talking calculators). Examples of calculation devices are calculators, slide rules, and abacuses. Examples of computation tables are multiplication, division, addition and subtraction charts, and number lines.

- **ACT and ASVAB:** Contact LEA Accommodations Coordinator.
- **AAPPL:** Not applicable for any student.
- **DIBELS:** Not applicable for any student.
- **NAEP:** Provided if applicable for the assessment.
- **KEEP:** Not allowed for any student.
- **SAGE:** Calculators are embedded within the assessment system when allowed. When a calculator is not available within the assessment, a calculator may not be used. The calculators used by SAGE Summative are available as a free download for instructional use.
 - Math grades 3, 4, 5: Not allowed for any student.
 - Math grade 6: Allowed when embedded within the assessment system. If a student is unable to access the online calculator due to their disability, an accommodation can be made to use a handheld calculator during the calculator segment of the assessment, based on need documented in the IEP.
 - Math grade 7 and above: Allowed when embedded within the assessment system. All students may choose to use the embedded calculator or the handheld calculator they are most comfortable using.
 - Science: Allowed for all students.
- **DLM:** Depends on the needs of the student.
- **UAA:** Depends on the student and task.
- **ACCESS for ELLs/W-APT:** Not applicable.

6.2.5.8. Change in the Order of Activities

Assessments and activities that require focused attention should be scheduled for the time of day when a student is most likely to demonstrate peak performance. To reduce fatigue and increase attention, activities or some tests can be administered over multiple days (e.g., completing a portion each day).

- **ACT and ASVAB:** Contact LEA Accommodations Coordinator.
- **AAPPL:** Allowed for all students.
- **DIBELS:** Allowed for all students.
- **NAEP:** Not allowed for any student.
- **KEEP:** Allowed Accommodation for students if designated in the IEP.
- **SAGE:** Allowed for all students.

- **DLM:** Depends on the needs of the student.
- **UAA:** Depends on the student and task.
- **ACCESS for ELLs/W-APT:** Listening must be administered first.

6.2.5.9. Color Adjustment

Some students with visual needs are better able to view information through color contrast. Students may alter the contrast in which content is presented via computer. Students may choose the font and background color combinations that help them perceive text-based content, including reverse contrast, such as white font on a black background. A color overlay changes the color of the entire page or screen. Lines and graphics are not affected by the color changes.

- **ACT and ASVAB:** Contact LEA Accommodations Coordinator.
- **AAPPL:** Allowed for all students.
- **DIBELS:** Allowed for all students with visual impairments as long as it is on the IEP.
- **NAEP:** Allowed for all students.
- **KEEP:** Not applicable for any student.
- **SAGE:** Embedded and allowed for all students.
- **DLM:** Depends on the needs of the student.
- **UAA:** Depends on the student and task.
- **ACCESS for ELLs/W-APT:** Allowed.

6.2.5.10. Descriptive Audio

Students may listen to audio descriptions of interactive answer spaces in test questions. This audio is provided in addition to text-to-speech as a test setting. **It must be activated in the student's preferences in the SAGE Portal prior to the assessment.**

- **ACT and ASVAB:** Contact LEA Accommodations Coordinator.
- **AAPPL:** Not applicable for any student.
- **DIBELS:** Not applicable for any student.
- **NAEP:** Allowed for all English learners.
- **KEEP:** Not applicable for any student.
- **SAGE:** Embedded and allowed for any student. **Must be marked as an accommodation in TIDE. See [Sage Portal](#) for more information.**
- **DLM:** Depends on the needs of the student.
- **UAA:** Depends on the student and task.
- **ACCESS for ELLs/W-APT:** Not available.

6.2.5.11. Directions—Oral Translation

Oral translation of directions involves immediate rendering of directions into a student’s native language. Clarification of directions is not allowed on any assessment. (“Directions” refers only to non-item content that appears at the beginning of the test or between testing sessions. It does not refer to the item’s stem, directions for answering a specific question, etc.)

- **ACT and ASVAB:** Contact LEA Accommodations Coordinator.
- **AAPPL:** Allowed for non-English speakers
- **DIBELS:** Not allowed for all English learners.
- **NAEP:** Allowed for all English learners.
- **KEEP:** Allowed for all English Learners.
- **SAGE:** Allowed for **directions** for all English learners. Assessment items, including reading and writing passages, graphs, questions and answer options, may not be translated in English language arts, mathematics or science.
- **DLM:** Depends on the needs of the student.
- **UAA:** Depends on the student and task.
- **ACCESS for ELLs/W-APT:** Allowed for all English learners.

6.2.5.12. Directions—Reread

To accurately understand the task a student is being asked to engage in, some students need to have directions reread. Clarification of directions is not allowed on any assessment. (“Directions” refers only to non-item content that appears at the beginning of the test or between testing sessions. It does not refer to the item’s stem, directions for answering a specific question, etc.)

- **ACT and ASVAB:** Contact LEA Accommodations Coordinator.
- **AAPPL:** Embedded for all students.
- **DIBELS:** Allowed for all students for some subtests—refer to DIBELS guidelines.
- **NAEP:** Allowed for all students.
- **KEEP:** Allowed for all students.
- **SAGE:** Embedded and allowed for all students as text-to-speech only.
- **DLM:** Depends on the needs of the student.
- **UAA:** Depends on the student and task.
- **ACCESS for ELLs/W-APT:** Allowed.

6.2.5.13. Directions—Signed

Directions may be signed by a certified interpreter. Clarification of directions is not allowed for any student. (“Directions” refers only to non-item content that appears at the beginning of the test or

between testing sessions. It does not refer to the item's stem, directions for answering a specific question, etc.)

- **ACT and ASVAB:** Contact LEA Accommodations Coordinator.
- **AAPPL:** Allowed for students with disabilities if signed by a certified interpreter.
- **DIBELS:** Allowed for students with disabilities if signed by a certified interpreter.
- **NAEP:** Allowed for students with disabilities if signed by a certified interpreter.
- **KEEP:** Allowed Accommodation for students if designated in the IEP.
- **SAGE:** Allowed for students with disabilities if signed by a certified interpreter.
- **DLM:** Depends on the needs of the student.
- **UAA:** Depends on the student and task.
- **ACCESS for ELLs/W-APT:** Allowed with a certified Interpreter.

6.2.5.14. Environment

Environmental changes may be necessary for some students. Some students benefit from the use of adaptive or special furniture, such as devices for sitting upright during instruction or assessment. Use of a slant board or wedge to minimize eye strain and provide a better work surface may be needed by some students. Special lighting may also be beneficial to some students.

- **ACT and ASVAB:** Contact LEA Accommodations Coordinator.
- **AAPPL:** Allowed for all students.
- **DIBELS:** Allowed for all students.
- **NAEP:** Allowed for all students.
- **KEEP:** Allowed Accommodation for students if designated in the IEP.
- **SAGE:** Allowed for all students.
- **DLM:** Depends on the needs of the student.
- **UAA:** Depends on the student and task.
- **ACCESS for ELLs/W-APT:** Allowed.

6.2.5.15. Extended Time

A standard extension may be time and one-half. This means a student may be allowed 90 minutes to complete a task that normally has a 60-minute limit. Double time may also be allowed, especially for students who are blind. Decisions should be made on a case-by-case basis, keeping in mind the type of assignments, assessments, and activities. **Unlimited time is not appropriate or feasible for any student.** Tests should not take all day. For example, a test designed to take most students one hour should not take any student more than approximately double time, or about two hours. Students who have too much time may lose interest and motivation to do their best work. Sometimes students who

request extended time end up not needing it because of the reduction in anxiety of simply knowing that plenty of time is available.

- **ACT and ASVAB:** Contact LEA Accommodations Coordinator.
- **AAPPL:** Accommodation
 - Interpersonal Speaking component **not allowed**, the time answer each prompt is fixed.
 - Interpretive Reading, Interpretive Listening, and Presentational Writing is **allowed**.
- **DIBELS:** Allowed for all students depending on the subtest—refer to DIBELS guidelines. Some subtests are timed for all students.
- **NAEP:** Allowed for students with disabilities, if in IEP.
- **KEEP:** This is not a timed assessment.
- **SAGE:** This is not a timed assessment.
- **DLM:** Depends on the needs of the student.
- **UAA:** Depends on the student and task.
- **ACCESS for ELLs/W-APT:** Allowed.

6.2.5.16. Graphic Organizer

Graphic organizers are tools that use visual symbols to express concepts and ideas, or to convey a meaning. They often depict the relationships between facts, ideas, and/or terms within a specific learning task. Examples of graphic organizers are story maps, concept maps, knowledge maps, advanced organizers, concept diagrams, and Venn diagrams. All students may be provided a blank sheet of paper with which they can create their own graphic organizer, without the aid or prompt of the teacher or proctor during the assessment.

- **ACT and ASVAB:** Contact LEA Accommodations Coordinator.
- **AAPPL:** Not applicable for any student.
- **DIBELS:** Not applicable for any student.
- **NAEP:** Allowed.
- **KEEP:** Not applicable for any student.
- **SAGE:** Not allowed for any student. They may create a graphic organizer on scratch paper.
- **DLM:** Depends on the needs of the student.
- **UAA:** Depends on the student and task.
- **ACCESS for ELLs/W-APT:** Not applicable for any student.

6.2.5.17. Highlight

Highlighting, providing visual cues, and using markers, arrows, and stickers, may draw attention to key words or content in instruction. These resources may or may not be applicable or available for assessments.

- **ACT and ASVAB:** Contact LEA Accommodations Coordinator.
- **AAPPL:** Not allowed for any student.
- **DIBELS:** Not allowed for any student.
- **NAEP:** Allowed.
- **KEEP:** Allowed Accommodation for students if designated in the IEP.
- **SAGE:** Highlight is embedded and allowed for all students.
- **DLM:** Depends on the needs of the student.
- **UAA:** Depends on the student and task.
- **ACCESS for ELLs/W-APT:** Not allowed.

6.2.5.18. Human Reader

In a computer-based environment, text-to-speech technology that reads text and describes graphics may replace a human reader. Human read-aloud of text may or may not be allowed on assessments. If allowed, readers should use even inflection so that the student does not receive any cue from the way the information is read. Human readers may not describe graphics and other symbols, or clarify, elaborate, or provide assistance to students. Familiarity with terminology and symbols specific to the content, especially high school mathematics and science, is necessary for human readers.

- **ACT and ASVAB:** Contact LEA Accommodations Coordinator.
- **AAPPL:** Allowed for directions.
- **DIBELS:** Not allowed for any student.
- **NAEP:** Allowed for students with disabilities, if in IEP.
- **KEEP:** Not applicable for any student.
- **SAGE:** Not allowed for any student for any portion of ELA, mathematics, or science assessments. Use text-to- speech instead for all students.
- **DLM:** Depends on the needs of the student.
- **UAA:** Depends on the student and task.
- **ACCESS for ELLs/W-APT:** Allowed for directions and listening passages.

6.2.5.19. Large Print

Students with visual impairments or other print disabilities may need assistance viewing content. Access for students with visual needs is typically provided through enlarging content. Large print paper

assessments may no longer be needed in computer-based testing if magnification of the entire screen and/or magnification of select areas is available. Larger monitors may also aid students in computer-based assessments. Large-print editions of instructional materials are required for some students with visual impairments or print disabilities. All text and graphic materials, including labels and captions on pictures, diagrams, maps, charts, exponential numbers, notes, and footnotes, must be presented in at least 18-point type for students who need large print.

Students, working with their teachers, need to find an optimal print size and determine the smallest print that can still be read (copyright issues may need to be addressed).

- **ACT and ASVAB:** Contact LEA Accommodations Coordinator.
- **AAPPL:** Not allowed for any student. Contact LEA Accommodation Coordinator.
- **DIBELS:** Allowed for students with disabilities. Produced by LEA.
- **NAEP:** Available for all students.
- **KEEP:** Allowed Accommodation for students if designated in the IEP.
- **SAGE:** Accommodation. Available on request for students with disabilities. Large print can be provided, on-demand, at student's school in a variety of font sizes on 8½-by-11-inch paper only.
- **DLM:** Depends on the needs of the student.
- **UAA:** Depends on the student and task.
- **ACCESS for ELLs/W-APT:** Accommodation; order from the USBE staff.

6.2.5.20. Magnification

Access for students with visual impairments is typically provided through magnifying content. Magnification of the entire screen, including text and graphics and/or a magnification tool that magnifies only a portion of the screen, may be available on assessments.

- **ACT and ASVAB:** Contact LEA Accommodations Coordinator.
- **AAPPL:** Allowed for all students.
- **DIBELS:** Allowed for all students.
- **NAEP:** Allowed for students with disabilities, if in IEP.
- **KEEP:** Allowed Accommodation for students if designated in the IEP.
- **SAGE:** Embedded and allowed for all students. Additional magnification may be needed to enlarge images.
- **DLM:** Depends on the needs of the student.
- **UAA:** Depends on the student and task.
- **ACCESS for ELLs/W-APT:** Allowed.

6.2.5.21. Minimize Distractions

Some students need help reducing distractions and/or maintaining focus while they are accessing and interacting with information presented during instruction or assessment. A student may wear noise buffers, such as earphones, earplugs, or headphones, to reduce distractions and improve concentration. Study carrels may also be used.

- **ACT and ASVAB:** Contact LEA Accommodations Coordinator.
- **AAPPL:** Allowed for all students.
- **DIBELS:** Allowed for all students.
- **NAEP:** Allowed for all students.
- **KEEP:** Allowed for all students.
- **SAGE:** Allowed for all students.
- **DLM:** Depends on the needs of the student.
- **UAA:** Depends on the student and task.
- **ACCESS for ELLs/W-APT:** Allowed.

6.2.5.22. Scratch Paper

Students may use **blank** scratch or graph paper without any directions or numbers included. If paper is provided during an assessment, care must be taken not to violate the security of the test. All paper should be collected and destroyed at the end of the assessment.

- **ACT and ASVAB:** Contact LEA Accommodations Coordinator.
- **AAPPL:** Allowed for all students.
- **DIBELS:** Not applicable for any student.
- **NAEP:** Embedded and allowed for all students.
- **KEEP:** Not applicable for any student.
- **SAGE:** Allowed for all students.
- **DLM:** Depends on the needs of the student.
- **UAA:** Depends on the student and task.
- **ACCESS for ELLs/W-APT:** Allowed.

6.2.5.23. Scribe

A scribe is a skilled person who has been trained to write/input what a student dictates by an assistive communication device, speech, pointing, or sign language. A scribe may not edit or alter student work in any way and must record word for word exactly what the student has dictated. The student must be able to edit what the scribe has written. Individuals who serve as scribes need to carefully prepare to assure they know the vocabulary involved and understand the boundaries of the assistance to be

provided. The role of the scribe is to write only what is dictated, no more and no less. A student who experiences a debilitating injury just prior to testing that prevents him/her from being able to write may need a scribe. **Scribes must have experience and understanding of how to effectively scribe for a student.** Some students may need human assistance to enter scores, which is allowed for students with this accommodation.

For the SAGE assessment, use of Speech-to-Text/Voice-Recognition Software used with assistive technology as a third party application is allowed. This allows students to use their voice and input devices to the computer, to dictate responses, or give commands (i.e., opening application programs, pulling down menus, and saving work) in place of human scribe.

Please refer to the USBE [Scribe Guidelines](https://schools.utah.gov/file/d20bd730-8fdd-4012-a84b-4424e487a735) (https://schools.utah.gov/file/d20bd730-8fdd-4012-a84b-4424e487a735).

- **ACT and ASVAB:** Contact LEA Accommodations Coordinator.
- **AAPPL:** Allowed for some components. Contact LEA Accommodations Coordinator.
- **DIBELS:** Not applicable for any student.
- **NAEP:** Allowed for students with disabilities, if in IEP.
- **KEEP:** Not allowed for any student.
- **SAGE:** Accommodation. Allowed for students with disabilities. Also allowed for students as necessary due to temporary injury just prior to assessment as non-accommodation. You must notify the USBE staff when a scribe is needed for a student.
 - Use of Speech-to-Text/Voice-Recognition Software device used with assistive technology as a third-party application may be used in place of human scribe. You must notify the USBE staff when a student needs to use these devices/programs. All Speech-to-Text/Voice-Recognition Software requests will need to be approved and activated in TIDE by a USBE staff member. Web-based programs, such as Google Read and Write, are not permitted.
- **DLM:** Depends on the needs of the student.
- **UAA:** Depends on the student and task.
- **ACCESS for ELLs/W-APT:** Accommodation or necessary due to injury.

6.2.5.24. Sign Language

Some students who are deaf or hard of hearing may need assistance accessing text-based instructional or assessment content. Access for these students is typically provided through American Sign Language (ASL).

- **ACT and ASVAB:** Contact LEA Accommodations Coordinator.
- **AAPPL:** Allowed for appropriate components. Contact LEA Accommodations Coordinator.
- **DIBELS:** Students with disabilities who are deaf or have a hearing impairment should use an alternate assessment to determine whether the student is reading on grade level.
- **NAEP:** Allowed for students with disabilities.

- **KEEP:** Allowed Accommodation for students if designated in the IEP.
- **SAGE:** Accommodation.
 - Allowed for students who are receiving ASL as an accommodation (must be documented in their IEP).
 - Only an ASL certified interpreter may interpret the SAGE assessment.
 - The student must have the text-to-speech option on each item and the interpreter must only interpret the audio portion.
 - Interpreters **may not** interpret any item for which the text-to-speech option or descriptive audio is not available.
 - If ASL is provided onscreen, the interpreter **may not** interpret the item. The student **must** use the online interpreter.
 - Interpreters may interpret interactive answer spaces in test questions but must listen to audio descriptions while interpreting. Descriptive Audio must be enabled prior to the test session.
- **DLM:** Depends on the needs of the student.
- **UAA:** Depends on the student and task.
- **ACCESS for ELLs/W-APT:** Allowed for directions and listening passages with a certified interpreter.

6.2.5.25. Spelling Check

Students who have difficulty producing text due to the speed with which they are able to enter keystrokes, or who have difficulty with language recall, may benefit from spell check or word prediction software for instruction. On assessments, spell check or word prediction may or may not be available, or only available on items where it would not violate the construct of the item. For example, spell check would not be available on writing passages that are assessing spelling.

- **ACT and ASVAB:** Contact LEA Accommodations Coordinator.
- **AAPPL:** Not allowed for any student.
- **DIBELS:** Not applicable for any student.
- **NAEP:** Not available for any student.
- **KEEP:** Not applicable for any students.
- **SAGE:** Embedded and allowed for all students. Embedded spell check will not be available on spelling items so that the construct of the item will not be violated.
- **DLM:** Depends on the needs of the student.
- **UAA:** Depends on the student and task.
- **ACCESS for ELLs/W-APT:** Not allowed.

6.2.5.26. Standard-Size Paper

Some students may have a disability that warrants a paper assessment.

- **ACT and ASVAB:** Contact LEA Accommodations Coordinator.
- **AAPPL:** Not applicable for any student.
- **DIBELS:** Allowed for students with disabilities. Produced by LEA.
- **NAEP:** Available for all students.
- **KEEP:** Not applicable for any student.
- **SAGE:** Accommodation. Standard-size paper print on demand is available on request for students with disabilities with **USBE staff notification**. On request, standard-size paper can be provided at the student's school.
- **DLM:** Depends on the needs of the student.
- **UAA:** Depends on the student and task.
- **ACCESS for ELLs/W-APT:** Allowed; order from vendor.

6.2.5.27. Strikethrough

Strikethrough functions as an answer eliminator, which allows students to cover and reveal individual answer options.

- **ACT and ASVAB:** Contact LEA Accommodations Coordinator.
- **AAPPL:** Not allowed for any student.
- **DIBELS:** Not allowed for any student.
- **NAEP:** Allowed.
- **KEEP:** Not applicable for any student.
- **SAGE:** Embedded and allowed for all students.
- **DLM:** Depends on the needs of the student.
- **UAA:** Depends on the student and task.
- **ACCESS for ELLs/W-APT:** Not allowed.

6.2.5.28. Text-to-Speech

Computer-based assessments may have embedded text-to-speech that standardizes the way text and graphics are presented. Descriptions of symbols, nomenclature, and other graphics can be provided with text-to-speech. Text-to-speech technology may be provided for an assessment for items where the construct of the item is not violated. For example, text-to-speech would not be available on a reading test for reading items because it would violate the construct of the test item.

- **ACT and ASVAB:** Contact LEA Accommodations Coordinator.

- **AAPPL:** Not available for any student.
- **DIBELS:** Not available for any student.
- **NAEP:** Embedded.
- **KEEP:** Not applicable for any student.
- **SAGE:** Embedded and allowed for any student. If the reading of any portion of an ELA, mathematics or science item violates the construct of that item, text-to-speech will not be available. When text-to-speech is appropriate, it will be available to select onscreen. Multiple voice packs are available for download if needed; information is available in the SAGE Technical Specifications documentation available at the [Sage Portal](http://sageportal.org) (<http://sageportal.org>). Students can practice listening to the voice pack on the device they will use for assessment all year during instruction, so they will be familiar with the voice.
- **DLM:** Depends on the needs of the student.
- **UAA:** Depends on the student and task.
- **ACCESS for ELLs/W-APT:** Not available.

6.2.5.29. Visual Representation

Visual Representations are manipulatives such as cubes, tiles, rods, blocks, models, etc. They may be used on all sections of the mathematics assessment **if** they are included in the student’s IEP or 504.

- **ACT and ASVAB:** Not applicable for any student.
- **AAPPL:** Not applicable for any student.
- **DIBELS:** Not applicable for any student.
- **NAEP:** Not applicable for any student.
- **KEEP:** Allowed Accommodation for students if designated in the IEP.
- **SAGE:** Accommodation. Allowed for the mathematics assessment. This accommodation **MUST** be documented in the student’s IEP or 504.
- **DLM:** Not applicable for any student.
- **UAA:** Not applicable for any student.
- **ACCESS for ELLs/W-APT:** Not applicable for any student.

6.2.6. Selecting Accommodations and Resources for Instruction and Assessment for Individual Students

Effective decision-making about appropriate accommodations and resources begins with making good instructional decisions. Then, by gathering and reviewing information about the student’s disability and present level of performance in relation to local and the Utah Core Standards, teachers can make appropriate assessment decisions. In essence, the process of making decisions about accommodations and resources is one in which members of the team attempt to “level the playing field” so that students with special needs can participate in the general education curriculum.

6.2.7. Documenting Accommodations on a Student’s IEP

For students with disabilities served under the IDEA, determining appropriate instructional and assessment accommodations and resources should not pose any particular problems for IEP teams who follow good practices. With information obtained from the required summary of the student’s present level of academic achievement and functional performance (PLAAFP), the process of identifying and documenting accommodations and resources should be fairly straightforward. The PLAAFP is a federal requirement in which IEP team members must state “how the child’s disability affects the child’s involvement and progress in the general education curriculum—the same curriculum as non-disabled children” (Sec. 614 (d)(1)(A)(i)(I)).

Depending on the design and overall format of a typical IEP, there are potentially three areas in which accommodations can be addressed. Resources may or may not be addressed depending on the needs of the student.

1. “Consideration of special factors” (Sec 614 (d)(3)(B)). This is where communication and assistive technology supports are considered.
2. “Supplementary aids and services” (Sec. 602 (33) and Sec. 614 (d)(1)(A)(i)). This area of the IEP includes, “aids, services, and other supports that are provided in regular education classes or other education-related settings to enable children with disabilities to be educated with non-disabled children to the maximum extent appropriate.”
3. “Participation in assessments” (Sec. 612 (a)(16)). This section of the IEP, the Assessment Addendum, documents accommodations needed to facilitate the participation of students with disabilities in general state- and district-wide assessments. IEP teams will designate how individual students will participate in state and district assessment by using specific codes:
 - SA – Standard Administration
 - PA – Participate with Accommodations
 - PM – Participate with Modifications
 - PAA – Participate with Alternate Assessment

On the Assessment Addendum, IEP teams will also mark the students required accommodations for instruction, classroom, district, and state wide assessment.

6.2.8. Documenting Accommodations on a Student’s 504 Plan

Section 504 of the Rehabilitation Act of 1973 requires public schools to provide certain accessibility and/or accommodation supports to students with disabilities even if they are not eligible for special education services under IDEA. The definition of a disability under Section 504 is much broader than the definition under IDEA. Generally, most IDEA students are also covered by Section 504, but not all Section 504 students are eligible for services under IDEA.

Some examples of general accommodations are; Environmental Strategies, Organizational Strategies, Behavioral Strategies, Presentation Strategies, Evaluation Methods.

Some other examples of students who may receive designated features or accommodations based on their 504 accommodation plan include students with:

- Allergies or asthma;
- Attention difficulties;
- Communicable diseases (e.g., hepatitis);
- Drug or alcoholic addictions, as long as they are not currently using illegal drugs;
- Environmental illnesses; or
- Temporary disabilities from accidents who may need short term hospitalization or homebound recovery.

6.2.9. Considering Accommodations for ELs with Disabilities or ELs on Section 504 Plans

Team members should consider the intensity of the student's language and disability-related needs. Decisions should be individualized based on these needs. Students with high English language needs and low disability-related needs will require more language-based accommodations than students with high disability-related needs and low English language needs. Students with high English language needs and high disability-related needs will benefit from intensive language and disability-related accommodations and/or resources.

Unlike students on IEPs and 504 plans, federal law does not mandate that individual language plans be written for each EL. If individual ELs require specific accommodations/resources in addition to the appropriate teaching strategies used for ELs in class, these accommodations and resources should be carefully selected and documented in a manner determined by the LEA.

6.2.10. Involving Students in Selecting, Using, and Evaluating Accommodations/Resources

It is critical for students with special needs to understand their needs and to learn self-advocacy strategies for success in school and throughout life. Some students have limited experience expressing personal preferences and advocating for themselves. Speaking out about preferences, particularly in the presence of authority figures, may be a new role for students, one for which they need guidance and feedback. Teachers and other team members can play a key role in working with students to advocate for themselves in the context of selecting, using, and evaluating accommodations.

The more that students are involved in the selection process, the more likely the accommodations and resources will be used, especially as students reach adolescence and their desire to be more independent increases. Students need opportunities to learn which accommodations/resources are most helpful for them, and then they need to learn how to make certain those accommodations/resources are provided in all of their classes and wherever they need them outside of school.

6.2.11. Determining the Consequences of Assessment Accommodations/Resources Use

When selecting accommodations or resources for state assessments with a student, it is important to look at state policies and procedures to determine whether use of an accommodation or resource

results in adverse consequences on a state test (e.g., lowering or not counting a student's score). Assessment accommodations/ resources that result in adverse consequences are commonly referred to as modifications, alterations, and nonstandard or unapproved accommodations (Thurlow & Wiener, 2000).

6.2.12. Questions to Guide Accommodation/Resources Selection

Selecting accommodations and resources for instruction and assessment is the role of a student's with special needs team. Use the questions provided below to guide teams in the selection of appropriate accommodations/resources:

- What are the student's learning strengths and areas for further improvement?
- How do the student's learning needs affect the achievement of grade-level content standards?
- What specialized instruction (e.g., learning strategies, organizational skills, reading skills) does the student need to achieve grade-level content standards?
- What accommodations/resources will increase the student's access to instruction and assessment by addressing the student's learning needs and reducing the effect of the student's disability? These may be new accommodations/resources or accommodations/resources the student is currently using.
- Are there assistive technology products that could help meet the student's learning and assessment needs?
- What accommodations/resources are regularly used by the student during instruction and assessment?
- What are the differences in student performance for assignments and assessments when accommodations/resources are used versus when they are not used?
- What is the student's perception of how well an accommodation/resource "worked"?
- Are there effective combinations of accommodations/resources?
- What difficulties did the student experience when using accommodations/resources?
- What are the perceptions of parents, teachers, and specialists about how the accommodation/resource worked?
- Should the student continue to use an accommodation/resource, are changes needed, or should the use of the accommodation be discontinued?

Of the accommodations or resource that match the student's needs, consider:

- The student's willingness to learn to use the accommodation/resource.
- Opportunities to learn how to use the accommodation/resource in classroom settings.
- When accommodations/resources can be used on state assessments.

Plan how and when the student will learn to use each new accommodation or resource. Be certain there is ample time to learn to use instructional and assessment accommodations or resources before an assessment takes place. Ongoing evaluation and improvement of the student's use of

accommodations and resources is critical. Students should have time to practice without using an accommodation or resource prior to the test in case that accommodation or resource is not allowed, as it may alter what the test is designed to measure, such as reading aloud an item used to assess reading.

6.2.13. Selecting Accommodations and Resources: Do’s and Don’ts

Do	Don’t
1. Make accommodation/resource decisions based on individualized needs.	1. Don’t make accommodation/resource decisions based on whatever is easiest to do (e.g., preferential seating).
2. Select accommodations/resources that reduce the effect of the disability or limited English proficiency.	2. Don’t select accommodations/resources unrelated to documented student learning needs or accommodations/resources intended to give students an unfair advantage.
3. Be certain to document instructional and assessment accommodations on the student’s 504, IEP, or EL plan.	3. Don’t use an accommodation that has not been documented on the 504, IEP, or EL plan.
4. Be familiar with the types of accommodations or resources that may be used as both instructional and/or assessment accommodations/resources.	4. Don’t assume that all instructional accommodations/resources are appropriate for use on assessments.
5. Ensure that appropriate accommodations are identified within online testing systems prior to the student’s testing.	5. Don’t assume that the accommodations listed in a student’s IEP are identified within the online testing systems prior to the student’s testing.
6. Be specific about the “where, when, who, and how” of providing accommodations/resources.	6. Don’t simply indicate that an accommodation or resource will be provided “as appropriate” or “as necessary.”
7. Refer to state accommodations/resources policies and understand implications of selections.	7. Don’t check every accommodation/resource possible on a checklist simply to be “safe.”
8. Evaluate accommodations/resources used by the student.	8. Don’t assume that the same accommodations/resources remain appropriate year after year.
9. Get input about accommodations/resources from teachers, parents, and students, and use it to make decisions at the students with special needs plan meetings.	9. Don’t make decisions about instructional and assessment accommodations/resources by yourself, without other team members.
10. Provide accommodations/resources for assessments routinely used for classroom instruction.	10. Don’t provide an assessment accommodation/resource for the first time on the day of a test.
11. Select accommodations/resources based on specific individual needs in each content area.	11. Don’t assume that certain accommodations or resources, such as extended time, are appropriate for every student in every content area.

6.3. Implementation of Accommodations and Resources During Instruction and Assessment

6.3.1. Accommodations/Resources During Instruction

The student must be provided with the selected accommodations/resources during instructional periods that necessitate their use. An accommodation/resource should not be used for the first time during assessments. Students should have an opportunity to use technology that is the same as or similar to the technology used on the assessment, which may be increased through the use of training tests.

6.3.2. Accommodations/Resources During Assessment Planning for Test Day

Once decisions have been made about providing accommodations/resources to meet individual student needs, the logistics of providing the actual accommodations or resources during state and LEA assessments must be mapped out. Some accommodations must be coordinated with the USBE staff in advance. It is not uncommon for members of the team to be given the responsibility for arranging, coordinating, and providing assessment accommodations and resources for all students who may need them. Thus, it is essential for all team members to know and understand the requirements and consequences of LEA and state assessments, including the use of accommodations and resources. It is important to monitor the provision of accommodations and resources during testing to ensure that accommodations and resources are delivered appropriately and that technology is working as it should.

Prior to the day of a test, be certain the test administrator and proctors know what accommodations and resources each student will be using and how to administer them properly. Staff members administering accommodations and resources, such as reading to a student or writing student responses, must adhere to specific guidelines so that student scores are valid.

6.3.3. Administering Assessments, Accommodations, and Resources

State and local laws and policies specify practices to assure test security and the standardized and ethical administration of assessments (see the [USBE Standard Test Administration and Testing Ethics Policy](https://schools.utah.gov/File/bd4cdc0e-1892-4b64-bac4-a44bf07771a9) located at <https://schools.utah.gov/File/bd4cdc0e-1892-4b64-bac4-a44bf07771a9>). Test administrators, proctors, and all staff members involved in test administration must adhere to these policies. It is required that test administrators and others involved in assessments must:

- Take appropriate security precautions before, during, and after the administration of the assessment.
- Ensure that appropriate accommodations are identified within online testing systems prior to students testing.
- Understand the procedures needed to administer the assessment prior to administration. For example, what procedures are required to set up the administration of accommodations and resources within a computer-based testing system?
- Administer standardized assessments according to prescribed procedures and conditions, and notify appropriate persons if any nonstandard or delimiting conditions occur.

- Avoid any conditions in the conduct of the assessment that might invalidate the results.
- Provide for and document all reasonable and allowable accommodations and resources for the administration of the assessment to students with special needs.
- Avoid actions or conditions that would permit or encourage individuals or groups to receive scores that misrepresent their actual knowledge, skills or abilities.

Failure to adhere to these practices may constitute an ethics violation, test irregularity or a breach of test security, and must be reported and investigated according to state and LEA testing policies.

6.3.4. Ethical Testing Practices

Ethical testing practices must be maintained during the administration of a test. Unethical testing practices relate to inappropriate interactions between test administrators and students taking the test. Unethical practices include changing the content by paraphrasing or offering additional information, coaching students during testing, editing student responses, or giving clues in any way. Educators and school employees who serve as standardized assessment administrators that administer and/or proctor tests shall participate in annual ethics training provided by the local LEA and are accountable for ethically administering tests. (For additional information, see the [USB E Standard Test Administration and Testing Ethics Policy](#).)

6.3.5. Standardization

Standardization refers to adherence to uniform administration procedures and conditions during an assessment. Standardization is an essential feature of educational assessments and is necessary to produce comparable information about student learning. Strict adherence to guidelines detailing instructions and procedures for the administration of accommodations is necessary to ensure test results reflect actual student learning.

6.3.6. Test Security

Test security involves maintaining the confidentiality of test questions and answers, and is critical to ensure the integrity and validity of a test. Test security can become an issue when accessible test formats are used (e.g., braille, large print) or when someone other than the student is allowed to see the test (e.g., interpreter, reader, or scribe). In order to ensure test security and confidentiality, test administrators need to:

1. Keep testing materials in a secure place and control computer access to prevent unauthorized access.
2. Keep all test content confidential and refrain from sharing information with or revealing test content to anyone for both paper-based and computer-based assessments.
3. All test materials are to be organized and returned to the School Testing Coordinator, as appropriate. Educators and test administrators may not preview test content prior to the assessment.

4. All by-products of student testing are collected and protected between and after testing sessions, and securely destroyed as appropriate. This includes notes, outlines, graphic organizers, student drafts, etc.

6.4. Evaluating and Improving Accommodation and Resource Use

Accommodations and resources must be selected on the basis of the individual student's needs and must be used consistently for instruction and assessment. Data on the use and impact of accommodations and resources during assessments may reveal questionable patterns of accommodations/resources use, as well as support the continued use of some accommodations/resources or the rethinking of others. Examination of the data may also indicate areas in which the students with special needs teams and test administrators need additional training and support.

Observations conducted during test administration, and talking with test administrators and students after testing sessions, will likely yield data that can be used to analyze accommodation/resource information at the student, school, or LEA level. Accommodation/resource information can be analyzed in different ways. The following sections contain some questions to guide data analysis at the school and LEA level and the student level.

6.4.1. Questions to Guide Evaluation of Accommodations Use at the School or LEA Level

1. Are policies to ensure ethical testing practices, the standardized administration of assessments, and test security practices followed before, during, and after the day of the test?
2. Are there procedures in place to ensure test administration procedures are not compromised with the provision of accommodations or resources?
3. Are students receiving accommodations/resources as documented in their students with special needs plans?
4. Are there procedures in place to ensure that test administrators adhere to directions for the implementation of accommodations/resources?
5. How many students with special needs are receiving accommodations/resources?
6. What types of accommodations or resources are provided, and are some used more than others?

6.4.2. Questions to Guide Evaluation of Accommodations/Resource Use at the Student Level

1. What accommodations/resources are used by the student during instruction and assessments?
2. What are the results of classroom assignments and assessments when accommodations/resources are used versus when accommodations/resources are not used? If a student did not meet the expected level of performance, is it due to not having access to the necessary instruction, not receiving the accommodations/resources, or using inappropriate or ineffective accommodations/resources?
3. What is the student's perception of how well the accommodation/resource worked?

4. What combinations of accommodations/resources seem to be effective?
5. What are the difficulties encountered in the use of accommodations/resources?
6. What are the perceptions of teachers and others about how the accommodation/resource appears to be working?

These questions can be used to evaluate the accommodations/resources used at the student level, as well as the school or LEA levels. School- and LEA-level questions can be addressed by a committee responsible for continuous improvement efforts, while the student-level questions need to be considered by the students with special needs team. It is critical to stress that evaluation is not the responsibility of just one individual. The entire 504, IEP, or EL team should contribute to the information-gathering and decision-making processes.

6.4.3. Post-Secondary Implications

College- and career-readiness is an important educational outcome for all students. As students with special needs plan for their transition to post-secondary settings, it is important for teams to have documented use of accommodations and resources so students can continue to advocate for their use, as needed, in their college and career settings. Colleges and universities may allow fewer accommodations/resources than are available in public K–12 education settings, so it is important for students to document their need to use accommodations and resources. This may also be true for students who transition into vocational and other workplace settings.

7. Appendices

Appendix A: Accommodation/Resource Use in the Classroom

Use this chart to track different aspects of how a student uses an accommodation or resource in your classroom. This will help inform decision-making on assessment accommodations and resources.

Student: _____ Date: _____

What accommodation(s) and/or resource(s) does the student use in the classroom? List them under "Accommodation(s) and/or Resource(s)" in the chart. Then answer the questions in the chart. Accommodations for instruction and assessment must be included in the Student's Special Needs Plan. Resources may be included on the special needs student plan, but are optional.

Questions	Accommodation(s) and/or Resource(s)
1. Is it noted in the Special Needs Student Plan?	
2. For what task(s) is it used?	
3. Does the student use it for that task every time? How often?	
4. Does the student use it alone or with assistance (e.g., peers, paraeducator)?	
5. Does one accommodation or resource seem more effective when used with another on a task?	

Appendix B: Participation Criteria for DLM/UAA

The DLM Alternate Assessment will be used to assess students with severe cognitive disabilities in ELA and math. The UAA will continue to be administered in science.

DLM/UAA Participation Criteria	Participation Criteria Descriptors	Agree (Yes) or Disagree (No)? (Provide documentation for each)
1. The student has a significant cognitive disability.	Review of student records indicates a disability or multiple disabilities that significantly affect intellectual functioning and adaptive behavior. <i>Adaptive behavior is defined as essential for someone to live independently and to function safely in daily life.</i>	Yes / No
2. The student's learning content is linked to the Utah Core Standards.	Goals and instruction listed on the IEP for this student are linked to the enrolled grade level Utah Core Standards through the Essential Elements and address knowledge and skills that are appropriate and challenging for this student.	Yes / No
3. The student requires extensive direct individualized instruction and substantial supports to achieve measurable gains in the grade- and age-appropriate curriculum.	The student (1) requires extensive, repeated, individualized instruction and support that is not of a temporary or transient nature, and (2) uses substantially adapted materials and individualized methods of accessing information in alternative ways to acquire, maintain, generalize, demonstrate, and transfer skills across multiple settings.	Yes / No

The student is eligible to participate in the DLM/UAA Alternate Assessment if all responses above are marked "yes." In addition, evidence for the decision for participating in the DLM/UAA Alternate Assessment is **not based** on:

1. A disability category or label.
2. Poor attendance or extended absences.
3. Native language/social/cultural or economic differences.
4. Expected poor performance on the general education assessment.
5. Academic and other services the student receives.
6. Educational environment or instructional setting.
7. Percent of time receiving special education.
8. English learner (EL) status.
9. Low reading level/achievement level.

10. Anticipated student's disruptive behavior.
11. Impact of student scores on accountability system.
12. Administrator decision.
13. Anticipated emotional duress.
14. Need for accommodations (e.g., assistive technology/augmentative and alternative communication) to participate in assessment process.

Appendix C: After-Test Accommodation and/or Resource Questions

Use this form after a test to interview a student about the accommodation(s) and/or resource(s) provided and used—whether it was useful and whether it should be used again. Also note any adjustments or difficulties experienced by the student either in how the accommodation and/or resource was administered or in using the accommodation and/or resource during the assessment.

Student: _____

Date: _____

Accommodation used: _____

Resource used: _____

Questions	Test:	Test:	Test:	Test:
Was the accommodation or resource used? Comments:	Yes / No	Yes / No	Yes / No	Yes / No
Was the accommodation or resource useful? Comments:	Yes / No	Yes / No	Yes / No	Yes / No
Were there any difficulties with the accommodation or resource? (Are adjustments needed?) Comments:	Yes / No	Yes / No	Yes / No	Yes / No
Should the accommodation or be used again? Comments:	Yes / No	Yes / No	Yes / No	Yes / No

Student signature: _____

Appendix D: Assessment Accommodations or Resource Plan

Student Information

Name: _____
Date of Assessment: _____
Name of Assessment: _____

Case Information

EL Teacher: _____
Special Education Teacher: _____
General Education Teacher(s): _____
School Year: _____ Building/School: _____

Assessment accommodations/resources that the student needs for this assessment and date arranged:

Accommodations and/or Resources	Date Arranged
1. _____	_____
2. _____	_____
3. _____	_____
4. _____	_____

Comments: _____

Person responsible for arranging accommodations and/or resources and due date:

Person Responsible	Due Date	Date Arranged
1. _____	_____	_____
2. _____	_____	_____
3. _____	_____	_____
4. _____	_____	_____

Comments: _____

Plan participants for this process (signatures): _____

Adapted from Scheiber, B., & Talpers, J. (1985). *Campus Access for Learning Disabled Students: A Comprehensive Guide*. Pittsburgh: Association for Children and Adults with Learning Disabilities.

Appendix E: Logistics Planning Checklist

Directions: This Logistics Planning Checklist can be used in the planning and implementation of assessment accommodations and/or resources for an individual student. Use the checklist by indicating Y (Yes), N (No), or NA (Not Applicable).

Accommodations/Resources Used Throughout the Academic Year	Y	N	NA
1. Accommodations and/or resources are documented by the teacher.			
2. Student uses accommodations or resources regularly and evaluates use.			
3. A master accommodation or resource plan/database listing assessment accommodation or resource needs for all students tested is updated regularly.			

Preparation for Test Day	Y	N	NA
1. Coordinate the provision of braille, large print, etc. with the USBE.			
2. Ensure that all educators involved in the administration of state assessments receive ethics training.			
3. Special test requests are considered for individual students based on information contained in the accommodation or resource plan (e.g., large print, braille).			
4. Test administrators/proctors receive a list of accommodations or resource needs for students they will supervise (list comes from the accommodations or resource plan/database).			
5. Adult supervision is arranged and test administrators receive training for each student receiving accommodations or resource in small group or individual settings, including extended time (with substitutes available).			
6. Certified interpreters are arranged for individual students (with substitutes available).			
7. Special equipment is arranged and checked for correct operation (e.g., audio amplification device).			
8. Use training tests where available to ensure that accommodations can successfully be provided.			

Accommodations and/or Resources on the Day of the Test	Y	N	NA
1. All eligible students receive accommodations or resources as determined by their students with special needs plan.			
2. Provision of accommodations or resources is recorded by test administrator.			
3. Substitute providers of accommodations or resources are available as needed (e.g., certified interpreters).			
4. Plans are made to replace defective equipment.			

Consideration After the Day of the Test	Y	N	NA
1. All equipment is returned to appropriate locations.			
2. Students who take make-up tests receive needed accommodations or resources.			
3. Effectiveness of accommodation or resource use is evaluated by test administrators and students, and plans are made for improvement.			

Appendix F: Accommodations/Resources Journal for Teachers

One way to keep track of what accommodations work for students with special needs is to support the student in keeping an accommodations and/or resources journal. The journal lets the student be “in charge” and could be kept up to date through regular consultation with an EL teacher, special education teacher, or other staff members. Just think how much easier it would be for students with special needs team to decide which accommodations and/or resources to document if the student kept a journal documenting all of these things:

1. Accommodations and/or resources used by the student in the classroom and on tests
2. Test and assignment results when accommodations and/or resources are used and not used
3. The student’s perception of how well the accommodation and/or resource “works”
4. Effective combinations of accommodations and/or resources
5. Difficulties of accommodation and/or resource use
6. Perceptions of teachers and others about how the accommodation and/or resource appears to be working

In the spaces provided below, design and organize the use of an accommodations and/or resource journal for one of your students. Answer these questions:

1. What would you include as headings for the journal?

2. When would the student make entries in the journal, and what types of support would the student need to make these entries?

3. With whom would the student share journal entries, and when would it be done?

Appendix G: Identifying Roles and Responsibilities

This activity can be completed in small groups. Complete the columns below and discuss roles and responsibilities in the provision of standards-based education to students with special needs.

Your Role as You See It	The Role of Other Colleagues as You See Them

Adapted from *Delaware Accommodation Activity Sheets*, Delaware Department of Education.

Discussion Issues:

1. Is your role clear in the provision of standards-based education to students with special needs?
2. What appear to be similarities and differences between perceived roles and responsibilities of the students with special needs team?
3. To what extent does collaboration among the 504, IEP, or EL team occur in your building or LEA? What are some of the barriers or obstacles?
4. Are your boundaries clear? What are you doing now that you feel may be “out of your jurisdiction”?
5. What are some opportunities or barriers that can either facilitate or hinder future opportunities for general, ESL/bilingual, and special education teacher collaboration?

Appendix H: Accommodation and Resources Criteria for ELs with Disabilities and ELs on Section 504 Plans

Use this form to determine whether the student is eligible for instruction and assessment accommodations and resources.

Student: _____ Date: _____

Person filling out the form: _____

Questions	Yes (please describe)	No
Can you comment on the student's overall oral English language proficiency and level of English literacy?		
Can you comment on the student's disability needs?		
Has the student taken the English language proficiency test? If so, what is the student's score?		
Are you aware of the language(s) the student speaks in his/her family? If so, please specify the language(s) and the level of the student's oral proficiency and literacy in the language(s).		
Has the student received prior formal education before coming to the U.S.? Have there been gaps or interruptions?		
Has the student spent time in English-speaking schools prior to enrolling in this school? If so, how much time?		
Was the student enrolled in special education programs prior to transferring to this school? If so, please describe.		
Do you know how much time the student has spent in your state? Are there mobility issues?		

Questions	Yes (please describe)	No
Are you aware of the student's performance in other content areas and on other tests?		
Are there educational resources available to the student in his/her native language?		
Are you aware of any aspects of the student's home culture that may impact the accommodation/ resources selection process (taboos, gestures, kinesthetic, etc.)?		
Are there any other aspects of the student's characteristics that should be considered when selecting accommodations/resources for the student?		

Appendix I: Parent Input on Accommodations and Resources

Questions Parents Should Ask About Accommodations and Resources in Instruction and Assessments

About Instruction	About Accommodations
What instructional support does my child need to access and reach the academic standards?	What are the tests my child needs to take, what do they measure (e.g., regular or alternate academic standards), and for what purpose is each given?
How can my child and I advocate to receive accommodations/resources and/or linguistic support not yet provided in instruction?	Are the accommodations/resources allowed on state tests also provided for LEA tests?
Are the accommodations/resources and/or linguistic support my child is receiving in instruction meant to be a temporary support? If yes, what is the plan to help determine when to phase them out?	Can my child participate in part of an assessment with or without accommodations and/or resources?
How are the various staff members who work with my child providing accommodations, resources and/or linguistic support (across regular, special education or other staff)?	Are there consequences for allowing certain changes to how my child participates in a test? How will my child's test scores count?
	Do the consequences of accommodations and/or resources vary by type of test?

Questions for Instruction and Assessment

1. Is the need for each accommodation documented in my child's students with special needs plan?
2. Are there too many or too few accommodations or resources being provided?
3. What are my child's preferences for specific accommodations and resources?
4. If my child needs accommodations and/or resources, how will they be provided?
5. If an accommodation or resource used in instruction is not allowed on a test, is there another allowed option to support the student? If yes, has it been documented and tried in instruction first? If no, how is my child being prepared to work without the accommodations/resources?

Appendix J: ACT Allowable Accessibility Supports (Accommodations and Resources)

Please see the key and explanatory notes following the tables for a guide to the notations used in the tables below.

Presentation Supports

Description	Paper	Online	Reading	English	Writing	Math	Science
Audio-Recording, Full Test	A	—	✓	✓	✓	✓	✓
Reader Script, Full Test	A	—	✓	✓	✓	✓	✓
Screen Reader	A	—	✓	✓	✓	✓	✓
Text to Speech (available Spring 2018)	—	A	✓	✓	✓	✓	✓
Translated Written Directions—12 Languages Provided (ELs) ⁶	A	A	✓	✓	✓	✓	✓
Translated Audio, Full Test (see note below) ¹	A ¹	A ²	No	No	1	1	1
Word-to-Word Dictionary (ELs) ⁶	A	A	✓	✓	✓	✓	✓
American Sign Language (ASL), Directions Only ⁷	F ⁷	A	✓	✓	✓	✓	✓
Signed Exact English (SEE), Directions Only	A	A	✓	✓	✓	✓	✓
Signed Exact English (SEE), Full Test	A	—	✓	✓	✓	✓	✓
Cued Speech	A	—	✓	✓	✓	✓	✓
English Braille American Edition (EBAE/Nemeth), available with Tactile Graphics and Nemeth code for Math and Science (Contracted) Online support refers to required paper form companion to online test - see note. ²	A ²	A ²	✓	✓	✓	✓	✓
Unified English Braille (UEB), available with Tactile Graphics and Nemeth code for Math and Science (Contracted) ²	A ²	A ²	✓	✓	✓	✓	✓
Tactile Graphics (stand-alone) with EBAE/Nemeth ²	A ²	A ²	—	—	—	✓	✓
Tactile Graphics (stand-alone) with UEB/Nemeth ²	A ²	A ²	—	—	—	✓	✓
Large Print	A	—	✓	✓	✓	✓	✓
Browser Zoom Magnification	—	E	✓	✓	✓	✓	✓
Magnification	A	E	✓	✓	✓	✓	✓
Line Reader (Straight-edge Tool, locally provided) ⁷ (Online tool, or Locally provided paper straight edge)	F ⁷	E	✓	✓	✓	✓	✓
Color Contrast (Online ³) or Color Overlay (Locally Provided) ⁷	F ⁷	3	3	3	3	3	3

Interaction & Navigation Supports

Description	Paper	Online	Reading	English	Writing	Math	Science
Abacus	A	A	—	—	—	✓	—
Answer Masking Tool	E	E	✓	✓	✓	✓	✓
Answer Eliminator Tool	E	E	✓	✓	✓	✓	✓
Highlighter Tool ³	A	3	3	3	3	3	3
Keyboard Navigation	—	E	✓	✓	✓	✓	✓
Use Test Booklet for Scratch Paper	E	—	✓	✓	✓	✓	✓
Sheet of Paper to Use as Scratch Paper	A	E	✓	✓	✓	✓	✓
Calculator, Including Accessible Calculator, all personally provided (headphones required for talking calculator) ⁴	E	E	—	—	—	✓	—

Response Supports

Description	Paper	Online	Reading	English	Writing	Math	Science
Respond in Test Booklet or on Separate Paper	A	—	✓	✓	✓	✓	✓
Large Block Answer Sheet	A	—	✓	✓	✓	✓	✓
Dictate Responses	A	A	✓	✓	✓	✓	✓
Computer for Writing Essays and Constructed Responses	A	E	✓	✓	✓	✓	✓
Speech to Text	A	A	✓	✓	✓	✓	✓
Mark Item for Review Tool	E	E	✓	✓	✓	✓	✓
Word Prediction External Device ⁵	—	—	n/a	n/a	No ⁵	n/a	n/a

General Test Conditions Supports

Description	Paper	Online	Reading	English	Writing	Math	Science
Extra Time(ELs) ⁶	A	A	✓	✓	✓	✓	✓
Breaks	A	A	✓	✓	✓	✓	✓
Multiple Days	A	A	✓	✓	✓	✓	✓
Food or Medication for Individuals with Medical Need ⁷	E ⁷	E ⁷	✓	✓	✓	✓	✓
Special Seating/Grouping ⁷	E ⁷	E ⁷	✓	✓	✓	✓	✓
Location for Movement	E ⁷	E ⁷	✓	✓	✓	✓	✓
Individual Administration ⁷	E ⁷	E ⁷	✓	✓	✓	✓	✓
Administration at Optimum Time of Day ⁷	E ⁷	E ⁷	✓	✓	✓	✓	✓
Administration from Home or Care Facility ⁷	E ⁷	—	✓	✓	✓	✓	✓
Separate Setting or Location (Familiar Setting and/or Small Group) (ELs) ^{6,7}	E ⁷	E ⁷	✓	✓	✓	✓	✓
Audio Amplification	A	A	✓	✓	✓	✓	✓
Special Lighting ⁷	E ⁷	E ⁷	✓	✓	✓	✓	✓
Adaptive Equipment or Furniture ⁷	E ⁷	E ⁷	✓	✓	✓	✓	✓
Wheelchair Accessible Room	E ⁷	E ⁷	✓	✓	✓	✓	✓
Personalized Auditory/Visual Notification of Remaining Time	A	A	✓	✓	✓	✓	✓
Other Accommodations: Request Using TAA System	Yes	Yes	✓	✓	✓	✓	✓

Table Key and Explanatory Notes

Accommodation (“A” type) Supports used WITH required ACT approval listed in this table WILL result in Reportable Score.

Accommodation (“A” type) Supports used without required ACT approval, or not listed here (not allowed/not approved), will be assumed to be a Modification and will result in a NON-Reportable Score.

Embedded Universal (“E” type) Supports listed in this table, if used in an otherwise proper administration WILL result in a Reportable Score. Any examinee may use “E” type supports.

The symbol “—” indicates this support is not applicable or not available to this test delivery format.

1. Provided ONLY as part of State & District negotiated contract for non-reportable score only
2. All users with blindness will need to use companion paper form braille/tactile graphics on math and science tests as critical interpretive information within math and science graphics will not be read aloud. This is required for both paper and online test forms.
3. The online version of this support will be provided on all online tests when technology becomes available.
4. Calculator use is not permitted for Science test. Science test questions requiring calculations are designed so that answering the questions involves only minimal, rudimentary calculations. Some math oriented science constructs that are assessed (e.g., recognizing relationships in scientific data, translation of data) are intended to be performed without use of graphing functionalities often present on calculators.
5. The Writing Test domain of Language Use and Conventions (including grammar, syntax and word usage) can be compromised by device usage. Reading, English, Math and Science are currently in MC format, making Word Prediction non-applicable (n/a) at this time.
6. **English Learners (ELs):** Four Accommodation-level (“A”) supports now available to qualified English Learners (verified by ACT per ESSA criteria) are indicated in the chart above.
7. Embedded Supports (E), sometimes called “Local Arrangements,” require prior planning and resource coordination at the local level prior to ensure proper, secure test administration.